

RIO 2016 OLYMPIC SAILING COMPETITION ON BOARD CAMERA SPECIFICATIONS

As part of the continuing drive to improve and innovate Olympic broadcasting coverage, Olympic Broadcasting Services (OBS) aim to bring the viewer closer than ever before to the action in Rio 2016.

The following diagrams indicate the OBS proposed positions and bracket systems that have been developed for each type of boat. The High Definition Cameras that will be used are self-contained wireless cameras, which will be received via a dedicated RF network.

There are two types of cameras: the “PTRZ” will be used on the Finn, 470 men, 470 women, 49er, 49erFX and Nacra17 and the “POV” on the Laser and Laser Radial. The RS:X men and RS:X women will not carry an on board camera.

There are a limited number of live cameras. If a number of boats in a fleet are carrying a live camera, all other boats in that fleet will be required to carry a ‘dummy’ camera that is exactly the same weight and size. If a fleet is not scheduled for live broadcast, boats may not be required to carry the camera or dummy but will still carry the camera bracket.

All proposals are subject to further testing and modification.

Index	Page No.
PTRZ Camera	2
PTRZ Camera mounting plate	3
POV Camera	4
POV Camera mounting plate	5
Finn Mount	6
470 Mount	9
49er Mount	12
Nacra 17 Mount	13

OBS PTRZ Camera

REVISION HISTORY			
REV	DESCRIPTION	DATE	APPROVED

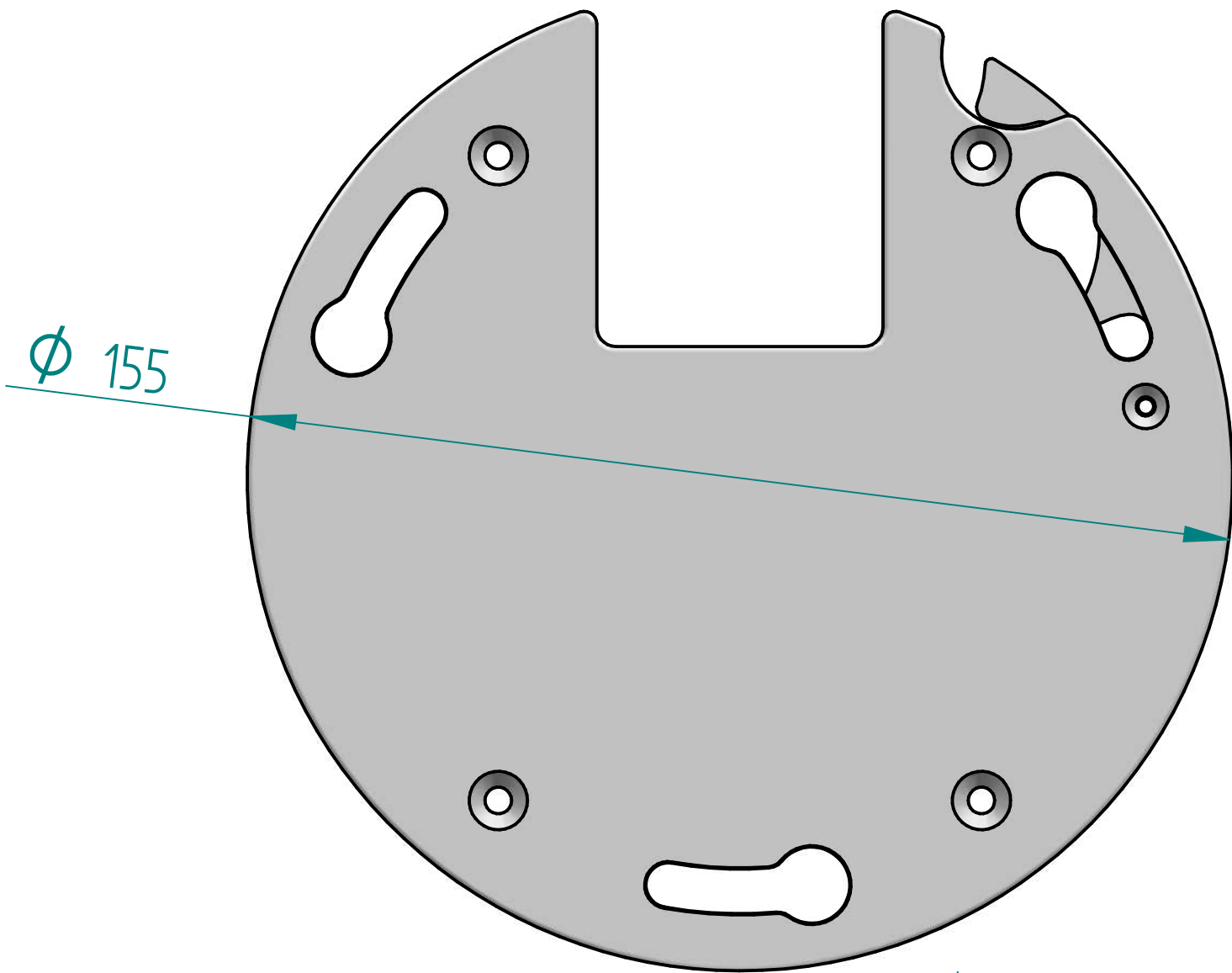


Gross weight = 2.4kg

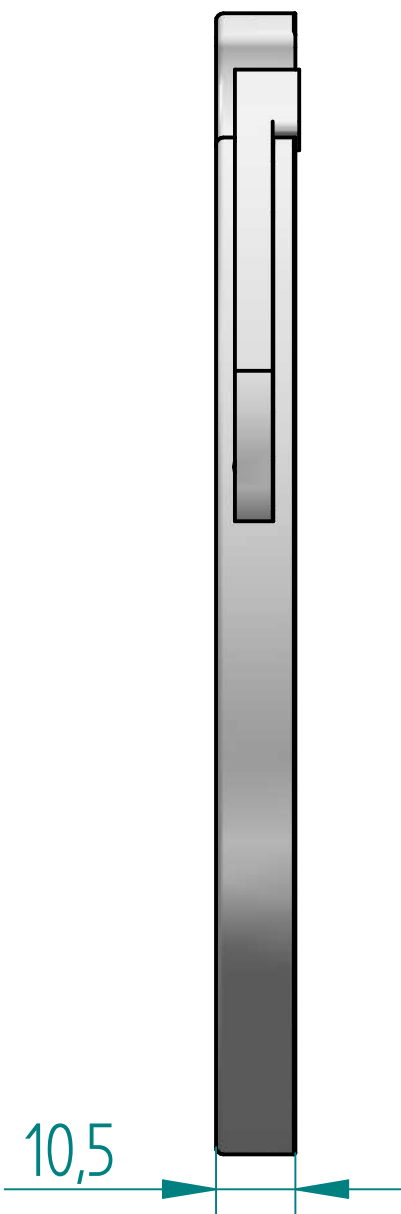
	NAME	DATE	Solid Edge	
DRAWN	Pete	04/28/16		
CHECKED			TITLE	
ENG APPR				
MGR APPR				
UNLESS OTHERWISE SPECIFIED DIMENSIONS ARE IN MILLIMETERS ANGLES ±XX° 2 PL ±XXX 3 PL ±XXXX			SIZE A2	DWG NO
			FILE NAME: OBS Camera Assembly GA.dft	REV
			SCALE	WEIGHT
			SHEET 1 OF 1	

OBS PTRZ Camera Mounting Plate

REVISION HISTORY			
REV	DESCRIPTION	DATE	APPROVED



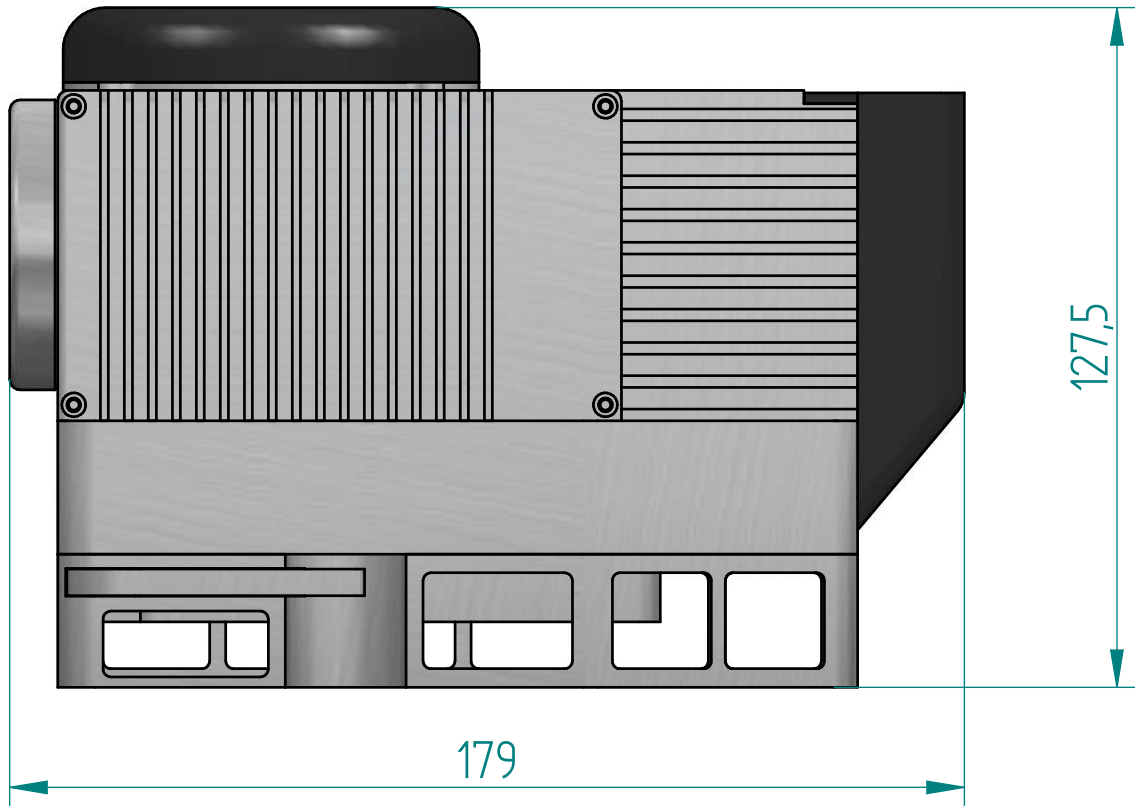
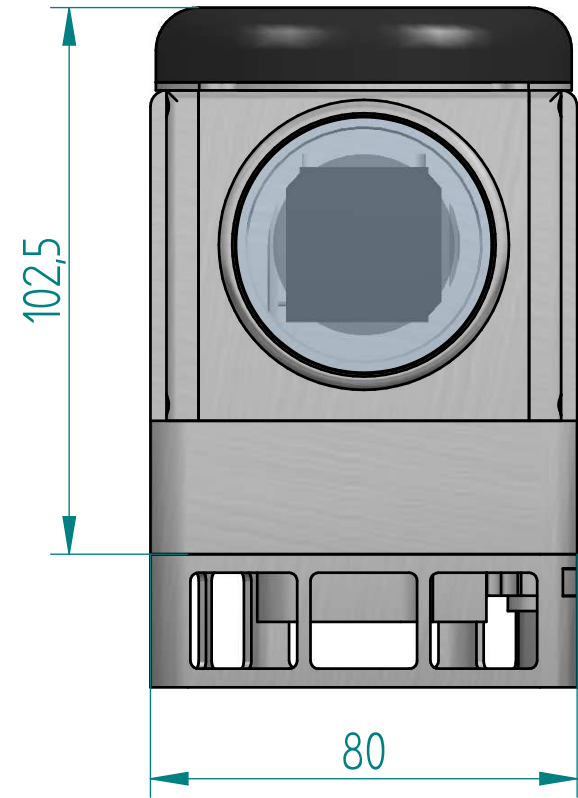
6 Holes on a 140mm PCD with one removed.



	NAME	DATE	MCS / S &T	
DRAWN	Jon P		Title	
CHECKED			OBS Mount GA	
ENG APPR			SIZE A3 Dwg No.	
MGR APPR			FILE NAME: Mount Assembly.dft	
UNLESS OTHERWISE SPECIFIED DIMENSIONS ARE IN MILLIMETERS ANGLES ±X.X° 2 PL ±X.XX 3 PL ±X.XXX			SCALE:	WEIGHT: SHEET 1 OF 1

OBS POV Camera

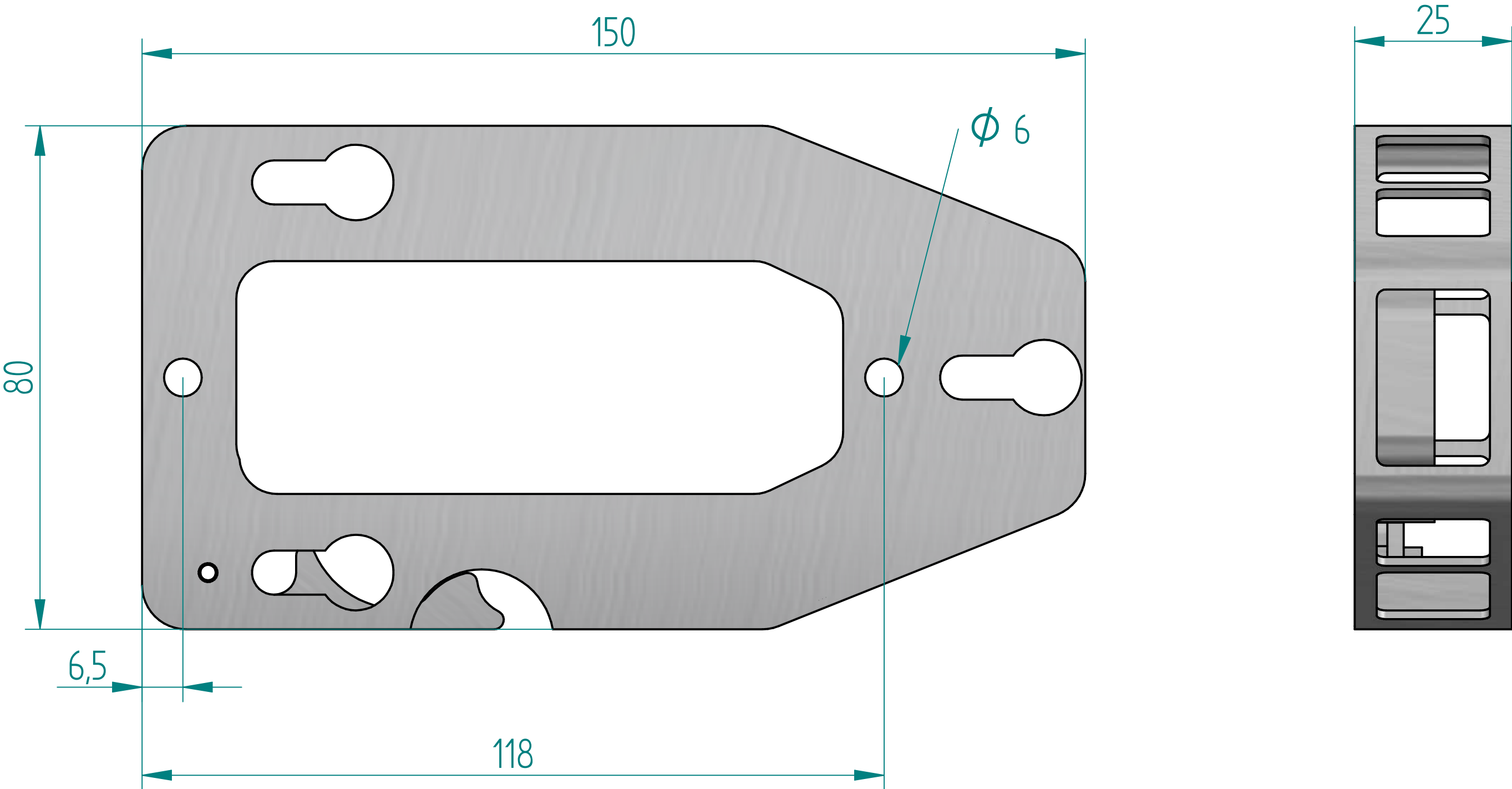
REVISION HISTORY			
REV	DESCRIPTION	DATE	APPROVED



	NAME	DATE	MCS / S & T		
DRAWN	Jon P				
CHECKED					
ENG APPR					
MGR APPR			OBS POV GA		
UNLESS OTHERWISE SPECIFIED DIMENSIONS ARE IN MILLIMETERS ANGLES ±X.X° 2 PL ±X.XX 3 PL ±X.XXX					
			SIZE A3	Dwg No.	
			FILE NAME: POV GA.dft		
			SCALE:	WEIGHT:	SHEET 1 OF 1

OBS POV Camera Mounting Plate

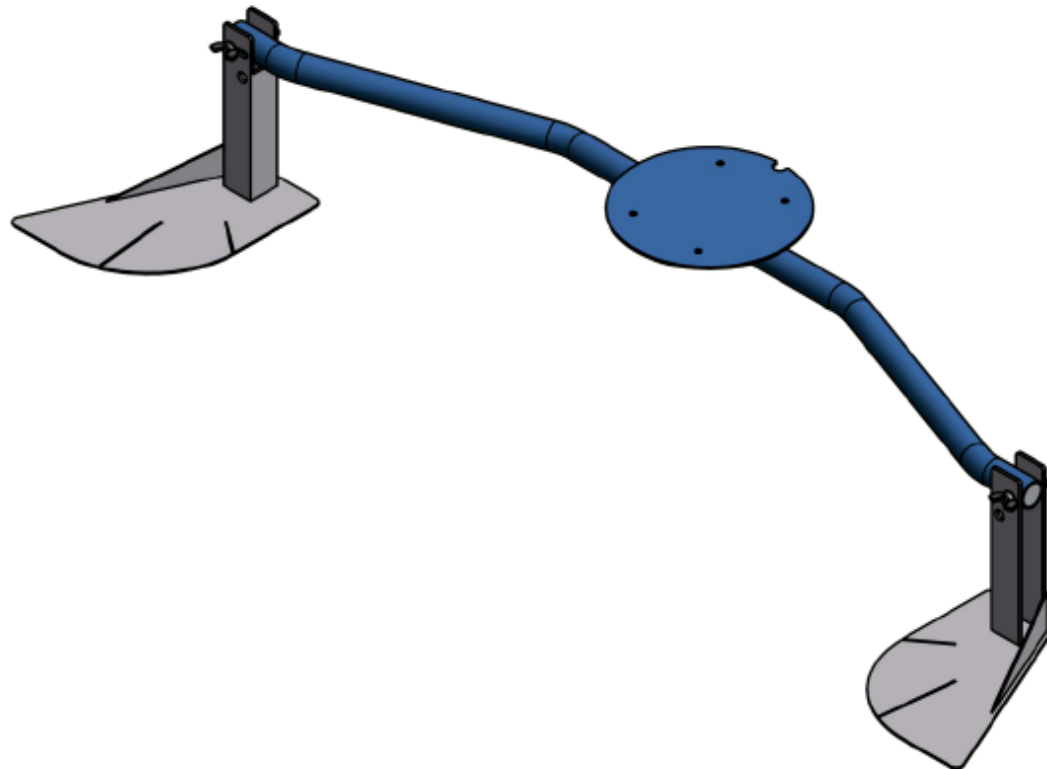
REVISION HISTORY			
REV	DESCRIPTION	DATE	APPROVED



	NAME	DATE	MCS / S & T		
DRAWN	Jon P				
CHECKED			Title OBS POV Base GA		
ENG APPR					
MGR APPR			FILE NAME: POV Base GA.dft		
UNLESS OTHERWISE SPECIFIED DIMENSIONS ARE IN MILLIMETERS ANGLES ±X.X° 2 PL ±X.XX 3 PL ±X.XXX					
			SIZE A3	Dwg No.	
			SCALE:	WEIGHT:	SHEET 1 OF 1

Finn Camera Mount

ZONE	LTR	DESCRIPTION	DATE	APPROVED
------	-----	-------------	------	----------



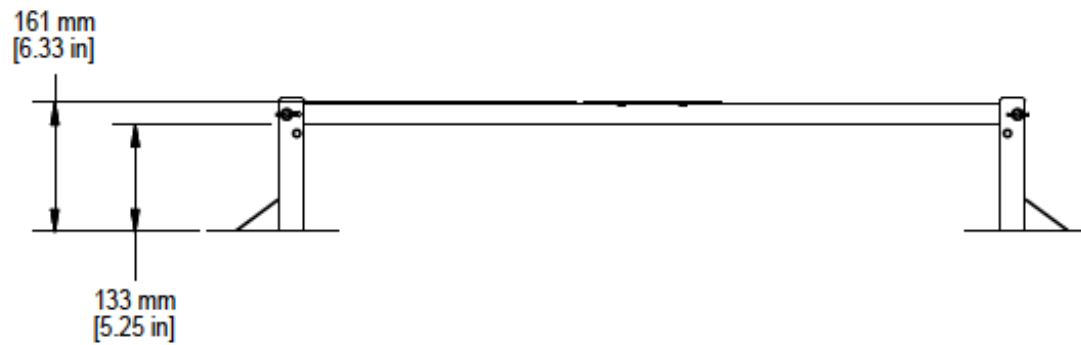
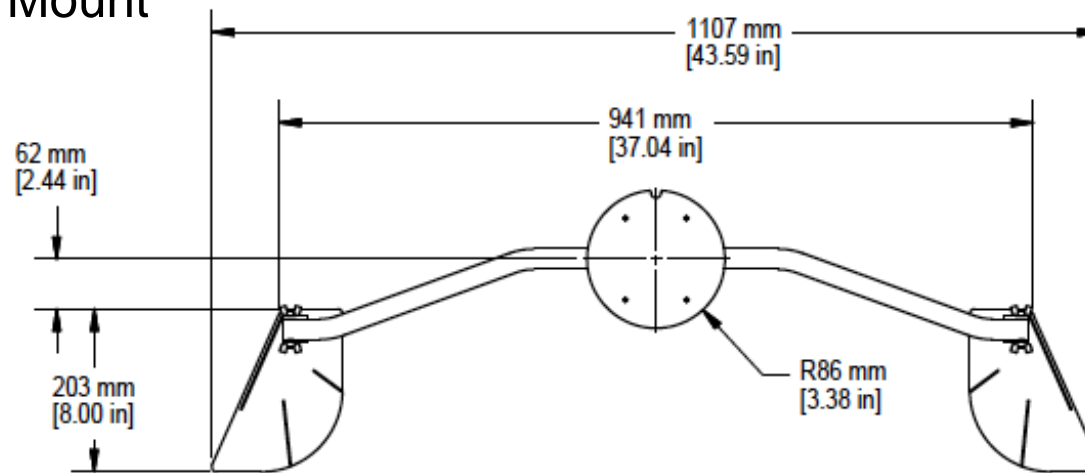
NOTES:

1. MATERIAL: SHEET, .080 THICK, 6061-T6 AL ALY PER ASTM B209; SHEET, .062 THICK, 6061-T6 AL ALY PER ASTM B209; U-CHANNEL, 1.25 X 1.25 X .125 THK, 6063-T5 AL ALY PER ASTM B221; TUBING, SEAMLESS, 1.00 OD. .065 WALL, 6061-T6 AL ALY PER ASTM B241.
2. FINISH: ANODIZE COATING, WHITE PAINT.
4. DELETED
5. ESTIMATED WEIGHT: 920g

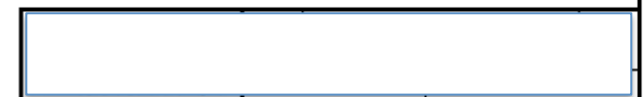
Update: Wing nut now eliminated and replaced with hinge on LHS and low profile pin on RHS.

Finn mount with locking base weight - 0.62kg

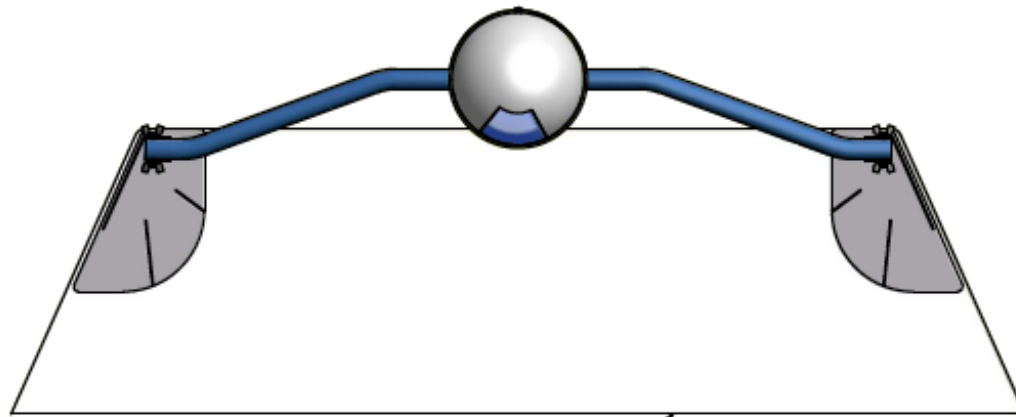
Finn Camera Mount



DIMENSIONS
SCALE 1 : 6



Finn Camera Mount

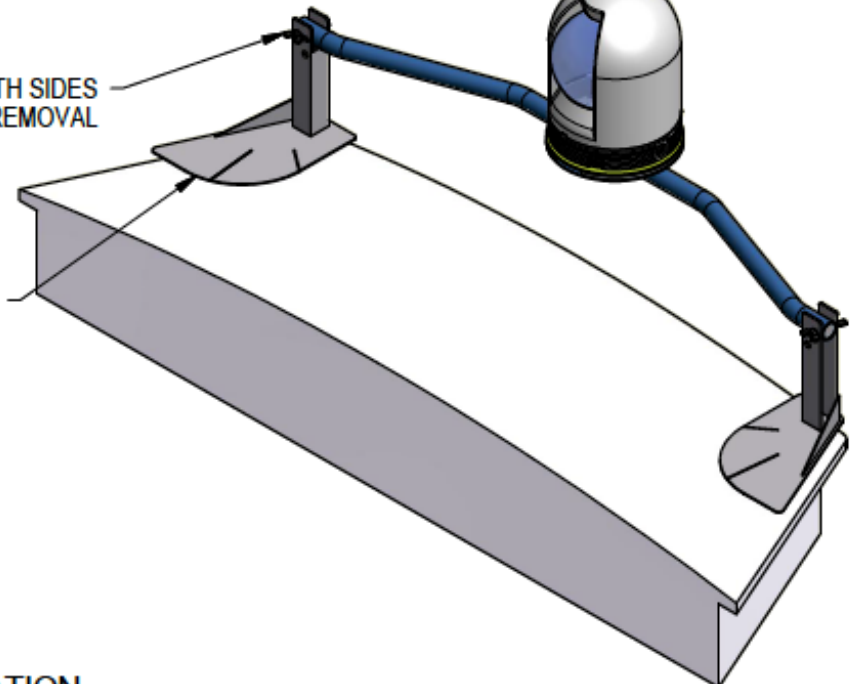


FINN TRANSOM

WING NUTS BOTH SIDES
FOR EASY REMOVAL

ATTACH FEET TO DECK
USING 3M DUAL LOCK

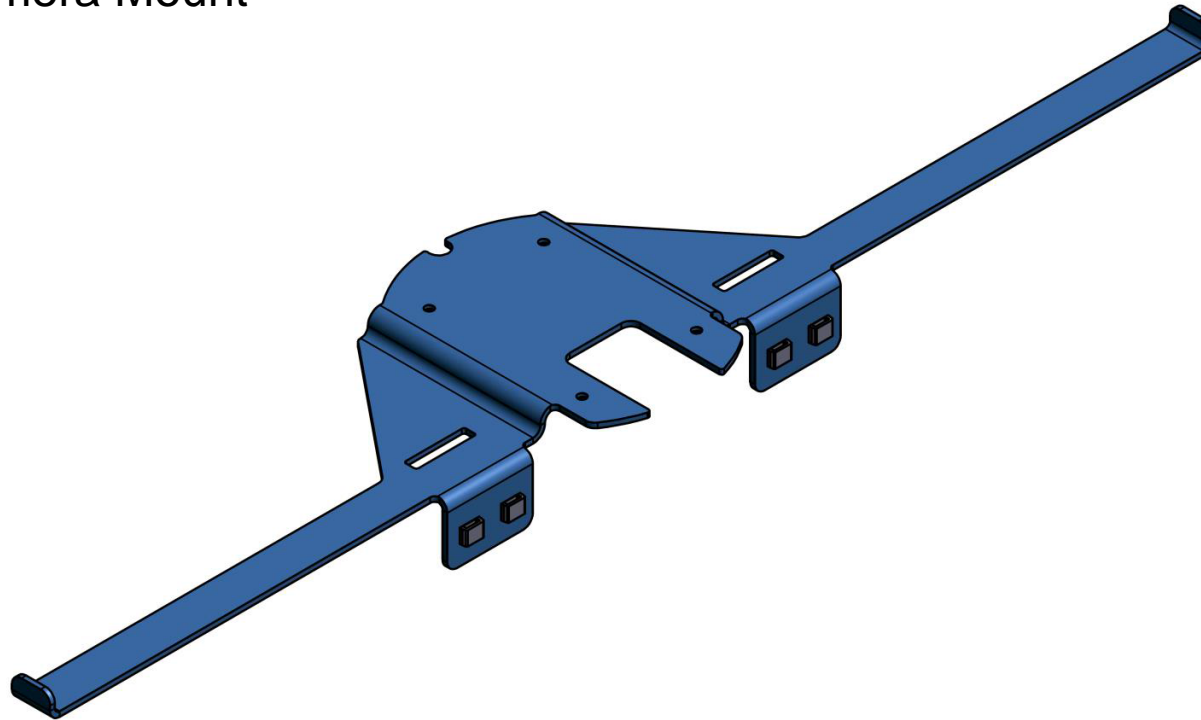
PTRZ CAMERA
WITH QUICK MOUNT



INSTALLATION
SCALE 1 : 8

470 Camera Mount

ZONE	LTR	DESCRIPTION	DATE	APPROVED
	3	PROTOTYPE UPDATES	5/22/2012	NKL



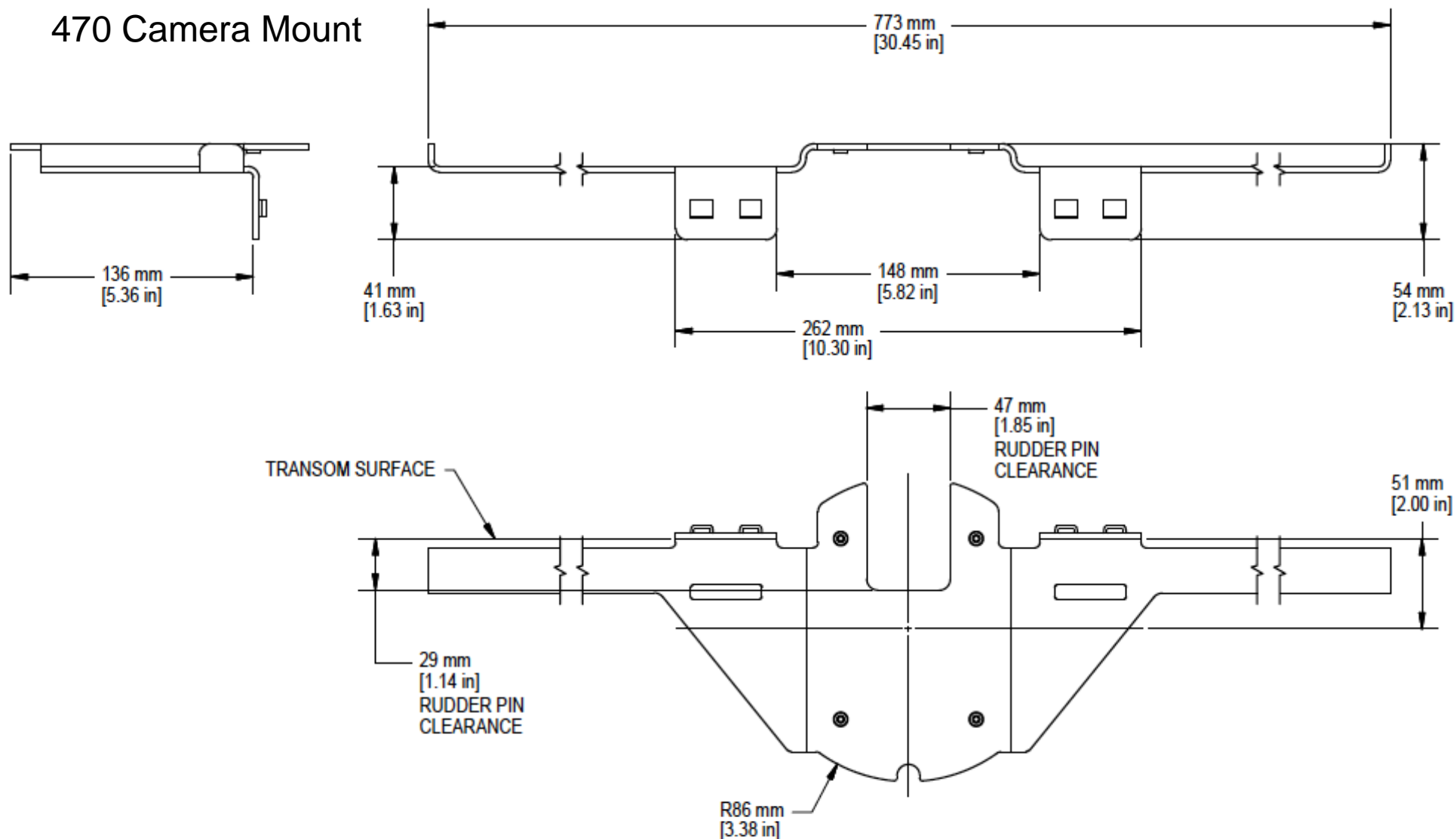
NOTES:

1. MATERIAL: SHEET, .125 THICK, 6061-T6 AL ALY PER ASTM B209; BAR SQUARE, 6061-T6 AL ALY PER ASTM B 221.
2. FINISH: ANODIZE COATING, WHITE PAINT.
3. AFFIX TO 470 TRANSOM USING CABLE TIES, AS SHOWN.
4. ESTIMATED WEIGHT: 500g

470 Mount with locking base weight - 0.56kg

	B				REV
			THIRD ANGLE PROJECTION		

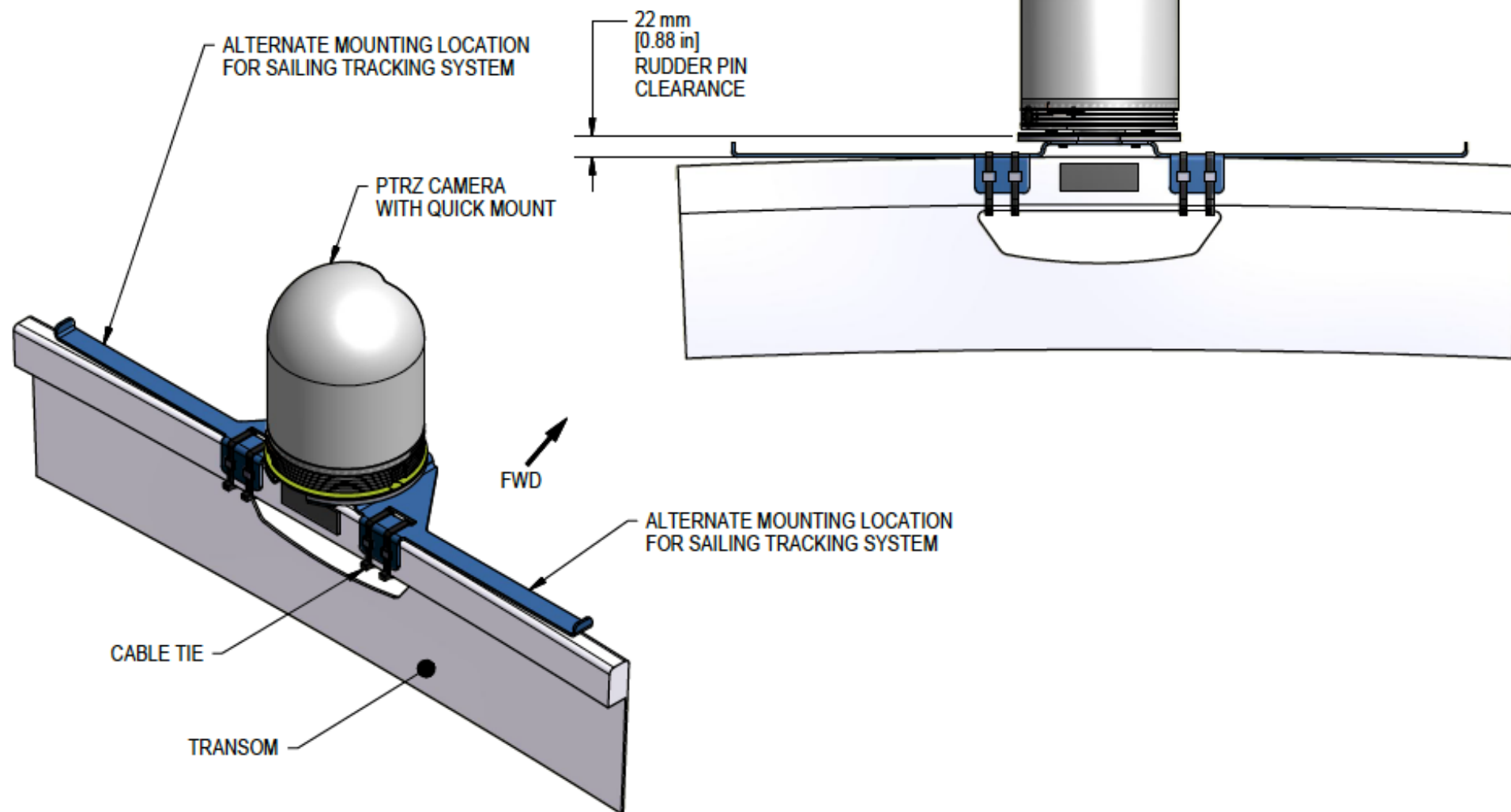
470 Camera Mount



DIMENSIONS

SIZE B	DRAWING NUMBER 13327-9-006	REV 3
SCALE 1:2	SHEET 2 OF 3	

470 Camera Mount

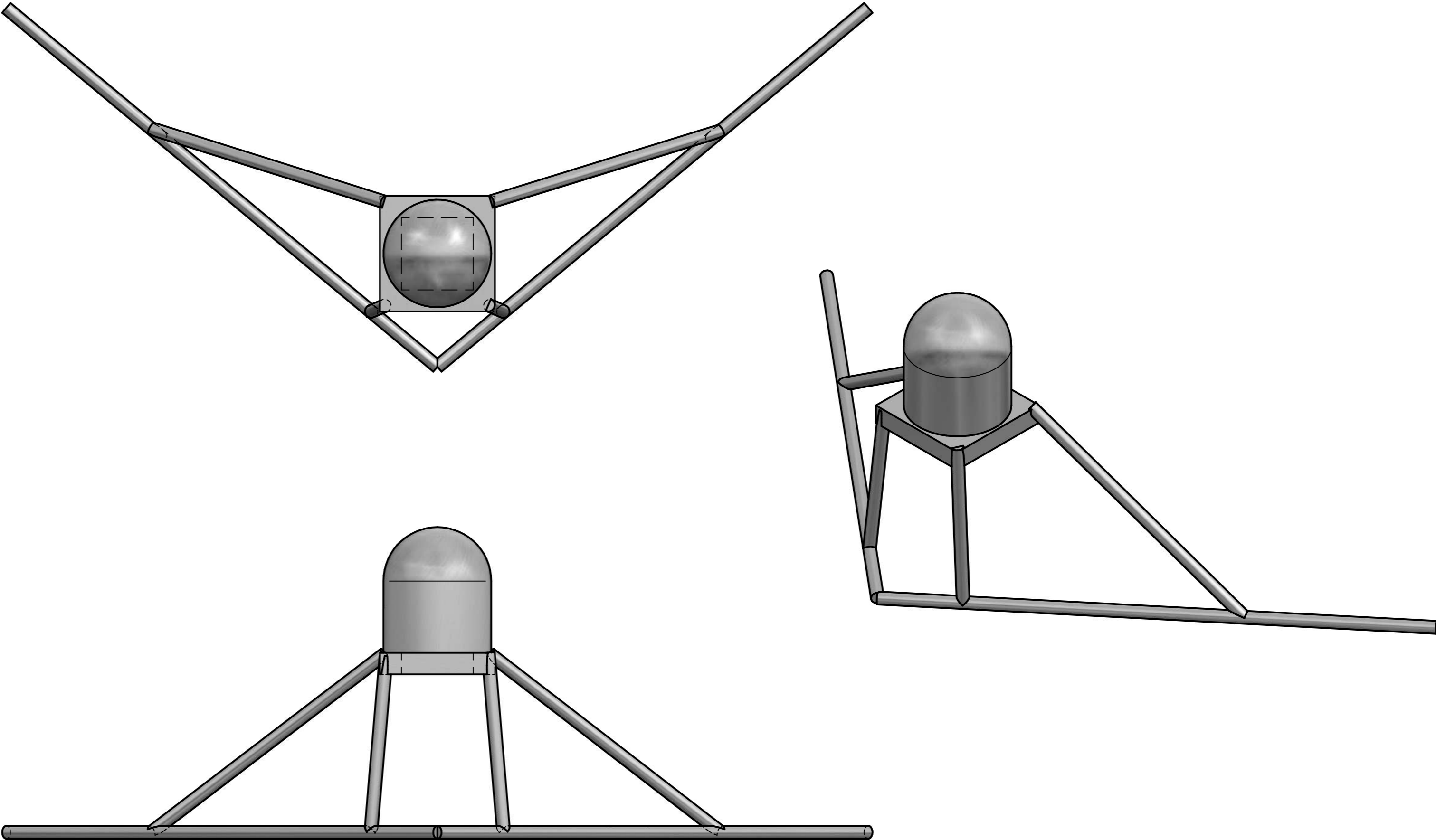


INSTALLATION
SCALE 1 : 4

SIZE B	DRAWING NUMBER 13327-9-006		REV 3
	SCALE 1:2	SHEET 3	OF 3

49er/49erFX Camera Mount

REVISION HISTORY			
REV	DESCRIPTION	DATE	APPROVED

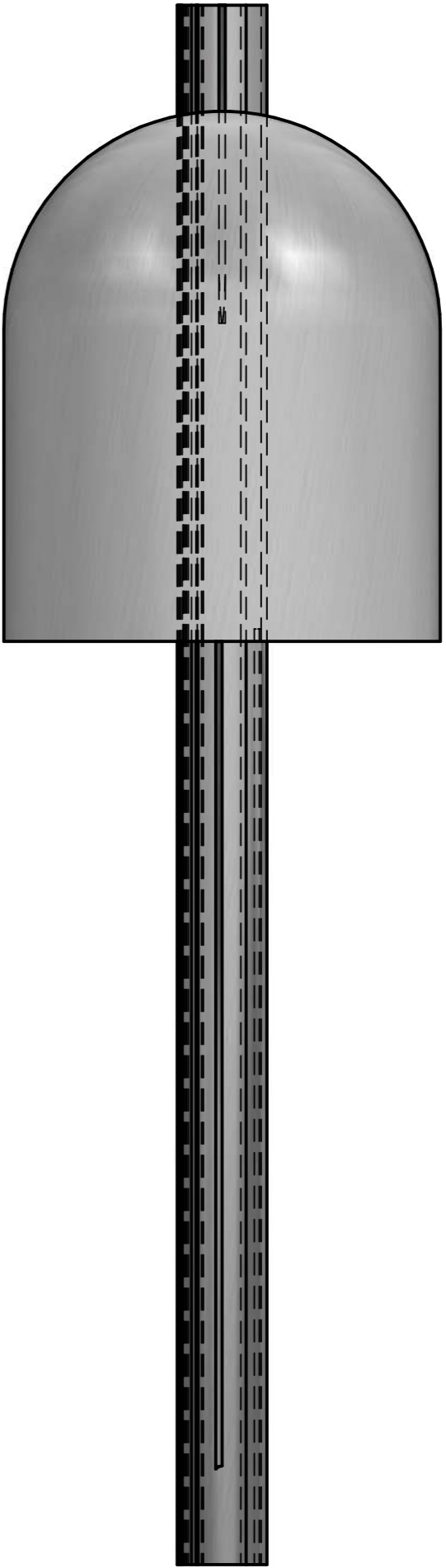
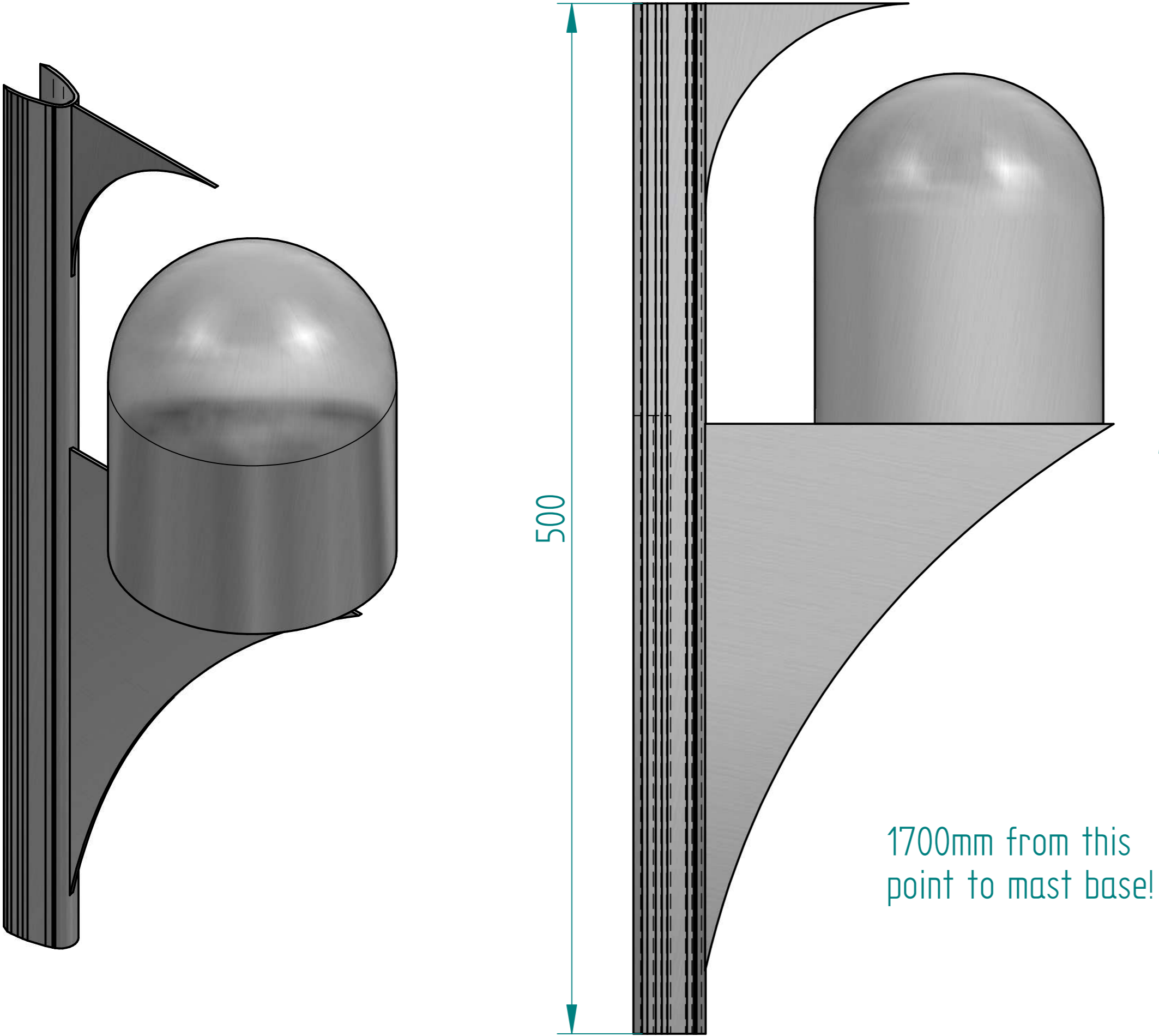


49er mount with locking base weight - 0.56kg

	NAME	DATE	Solid Edge		
DRAWN	STTcad	06/21/16			
CHECKED			TITLE		
ENG APPR					
MGR APPR					
UNLESS OTHERWISE SPECIFIED DIMENSIONS ARE IN MILLIMETERS ANGLES ±X.X° 2 PL ±XXX 3 PL ±XXXX			SIZE A2	DWG NO	REV
			FILE NAME: 49 er mount propper.dft		
			SCALE:	WEIGHT:	SHEET 1 OF 1

Nacra 17 Camera Mount

REVISION HISTORY			
REV	DESCRIPTION	DATE	APPROVED



Nacra 17 mount with locking base weight - 0.60kg

	NAME	DATE	Solid Edge	
DRAWN	STTcad	06/21/16		
CHECKED			TITLE	
ENG APPR				
MGR APPR			UNLESS OTHERWISE SPECIFIED DIMENSIONS ARE IN MILLIMETERS ANGLES ±XX° 2 PL ±XXX 3 PL ±XXXX	
			SIZE A2	DWG NO
				REV
			FILE NAME: nacra.mount.dft	
			SCALE:	WEIGHT: SHEET 1 OF 1