

READY STEADY TOKYO - Sailing

15-22 August 2019

NOTICE OF RACE

Amendment 1 marked in blue
Amendment 2 marked in purple
Amendment 3 marked in orange

The Organizing Authority is The Tokyo Organising Committee of the Olympic and Paralympic Games in conjunction with World Sailing.

1. RULES

- 1.1 Additional Rules referenced in the Notice of Race or Sailing Instructions will be published on the [READY STEADY TOKYO - Sailing](http://sailing.readysteadytokyo.com) website sailing.readysteadytokyo.com.
- 1.2 The regatta will be governed by the rules as defined in *The 2017-2020 Racing Rules of Sailing* (RRS). Other documents under RRS Definition: Rule (g) include:
 - 1.2.1 [DP] [SP] The [READY STEADY TOKYO - Sailing](#) Equipment Regulations (ER).
 - 1.2.2 [DP] The [READY STEADY TOKYO - Sailing](#) Support Team Regulations (including Coach Boats) (STR).
 - 1.2.3 [NP] [DP] [SP] The [READY STEADY TOKYO - Sailing](#) Athlete Media Requirements (AMR).
 - 1.2.4 [DP] The [READY STEADY TOKYO - Sailing](#) Competition Area Regulations (CAR).
 - 1.2.5 RRS Appendix P, Special Procedures for Rule 42.
 - 1.2.6 For Medal Races, World Sailing Addendum Q, Umpired Fleet Racing, available on the World Sailing website (www.sailing.org), will apply and changes a number of racing rules. A link to the version that is current when the regatta begins will appear in the Sailing Instructions.
- 1.3 No National Authority prescriptions will apply.
- 1.4 Decisions of the International Jury will be final as provided in RRS 70.5.
- 1.5 A boat shall neither make nor receive radio or telephone transmissions or communications while racing, except in an emergency or when using equipment provided by the race committee or Organising Authority. This restriction also applies to mobile telephones.
- 1.6 For the Men's Skiff, Women's Skiff and Mixed Multihull, RRS 44.1 and RRS P2.1 are changed so that the Two-Turns Penalty is replaced by the One-Turn Penalty.
- 1.7 In RRS 44.2 insert after the first sentence: "However, if Mark 1a is set, a boat may take a penalty for an incident in the zone around Mark 1 or on the leg between Mark 1 and Mark 1a, as soon as possible after leaving the zone around Mark 1a".
- 1.8 In all rules governing this regatta;
 - 1.8.1 Both 'athlete' and 'competitor' mean a person competing or intending to compete in the event.
 - 1.8.2 [SP] denotes a rule for which a standard penalty may be applied by the race committee or technical committee without a hearing (this changes RRS A5); and
 - 1.8.3 [NP] denotes a rule that shall not be grounds for protests by a boat. This changes RRS 60.1(a).
- 1.9 If there is a conflict between languages the English text will take precedence.
- 1.10 For Men's and Women's Windsurfer events:

Class Rules C.6.1 (c), C.7.1(d), C.8.1 (d) and C.9.1(d) are amended to be applicable to this event.
- 1.11 For the Mixed Two Person Multihull event:
 - 1.11.1 Class Rule C.1.2 (c) is amended to be applicable to this event.
 - 1.11.2 Add new Class Rule (C1.1(b):

RRS 42.3 is amended by adding the following:
(j) Except on a beat to windward, when foiling is possible (sailing with the hull clear of the water for

more than one boat length due to the effect of the hydrofoils), the boat's crew may pump the sails an unlimited number of times in order to initiate foiling.

1.11.3 Add a new Class Rule C.6.1 (g):

The attachments of the mainsheet system to the strap on the sail and to the traveler, may be replaced by attachments of any length of ropes, shackles or other items and their combinations. Both ends of all attachments must remain in the straight line from the traveler connection to the strap on the sail.

1.12 For the Men's and Women's Skiff events:

Class Rules C.8.2 (b), C.9.2(b) and C.10.3 (a) (i) are amended to be applicable to this event.

1.13 Finn Class rule C6.2 [Equipment Limitation] shall apply.

1.14 All the changes to the class rules in NoR 1.10, 1.11 and 1.12 are approved by the relevant class association as required by RRS 87.

2. **[DP] ADVERTISING, BOW NUMBERS and EQUIPMENT PROVIDED BY THE OA**

2.1 When provided by the Organizing Authority, boats or competitors shall carry, display or wear the following as instructed:

2.1.1 Bibs for all competitors;

2.1.2 Coloured bibs for Event leaders (1st, 2nd and 3rd);

2.1.3 Coloured dots on the mainsail for Event leaders (1st, 2nd, 3rd);

2.1.4 Bow number;

2.1.5 Event advertising;

2.1.6 Cameras, camera dummies and sound equipment; and

2.1.7 [SP] Tracking and timing system equipment.

2.1.8 [SP] Boats shall display national flags on mainsails as specified in their class rules.

3. **ELIGIBILITY AND ENTRY**

3.1 For each event the entry quota is one entry per National Authority, in good standing with World Sailing, unless there are fewer entry applications than the Tokyo 2020 quota (as per NoR 3.14) by the deadline in NoR 3.3. Then, World Sailing may allocate a National Authority a second entry based on the order of each National Authority's second highest appearance on the World Rankings for that event as of 30 April 2019.

3.2 All entry applications shall be through the appropriate National Authority and made by completing the entry application form that can be found on the event website after 15 February 2019.

3.3 The deadline for entry application is 30 April 2019, unless after 30 April 2019 the Organizing Authority allocates a second entry to a National Authority as per NoR 3.1 when the entry application deadline will be 15 May 2019. **World Sailing may extend these deadlines following consultation with Tokyo 2020 Organising Committee.**

3.4 The deadline for National Authorities to pay the entry fees is **10 July 2019**, unless otherwise agreed by the Organizing Authority in writing.

3.5 The deadline for National Authorities to confirm the names of the competitors competing in the regatta is 15 June 2019, unless otherwise agreed by the Organizing Authority in writing.

3.6 An entry is not complete until payment has been received and the boat has completed registration at the venue. Registration may include equipment and entry requirement checks.

3.7 If a sailor is less than 18 years old, he/she shall send the completed Parental Consent form to Tokyo 2020. This form can be found on the website.

3.8 National Authorities with entrants shall register their main point of contact with Tokyo 2020 by 30 April 2019.

3.9 World Sailing Eligibility in accordance with World Sailing Regulation 19 is required of all athletes.

3.10 Each athlete shall be registered as a World Sailing Sailor on the World Sailing website: www.sailing.org.

- 3.11 Each athlete shall be a national of the country they represent (see World Sailing Regulations 19.8 to 19.18). Each athlete shall present proof of their nationality at registration and whenever requested by World Sailing.
- 3.12 Olympic gender requirements for the 2020 Olympic Sailing Competition will apply for each of the 10 events.
- 3.13 For One Person boats, crew substitution is not permitted. For Two Person boats crew substitution is not permitted except in case of proven accident or illness and approved by World Sailing in writing.
- 3.14 The regatta is open to boats competing in events chosen for the 2020 Olympic Sailing Competition.

Event	Class	Tokyo 2020 Quota (Boats)
Men's Windsurfer	RS: X	25
Women's Windsurfer	RS: X	27
Men's One Person Dinghy	Laser	35
Women's One Person Dinghy	Laser Radial	44
Men's One Person Dinghy Heavyweight	Finn	19
Men's Two Person Dinghy	470	19
Women's Two Person Dinghy	470	21
Men's Skiff	49er	19
Women's Skiff	49er FX	21
Mixed Multihull	Nacra 17 (Foiling)	20

4. FEES

- 4.1 Fees are stated in Yen and include any local taxes

One Person events	35,000
Two Person events	55,000
Support boats (including one support person)	15,000
Additional support person	5,000

- 4.2 Entry fees will only be refunded at the discretion of the Organizing Authority.

5. FORMAT

- 5.1 The regatta will consist of an opening series and, provided a minimum of 6 races have been completed in the opening series, a medal race. The top ten finishers in the opening series of each event will advance to the medal race.
- 5.2 The format for any event may be changed in the Sailing Instructions to adapt it to the format chosen for the Tokyo 2020 Olympic Sailing Competition.

6. SCHEDULE

- 6.1 The schedule, including registration, equipment inspection and racing, is as follows:

Event	Registration & Equipment Inspection	Racing (including reserve days)	Number of Races
Men's Windsurfer	15-16 August	17-22 August	12 + Medal Race
Women's Windsurfer	15-16 August	17-22 August	12 + Medal Race
Men's One Person Dinghy	15-16 August	17-22 August	10 + Medal Race
Women's One Person Dinghy	15-16 August	17-22 August	10 + Medal Race
Men's One Person Dinghy Heavyweight	15-16 August	17-22 August	10 + Medal Race
Men's Two Person Dinghy	15-16 August	17-22 August	10 + Medal Race
Women's Two Person Dinghy	15-16 August	17-22 August	10 + Medal Race
Men's Skiff	15-16 August	17-22 August	12 + Medal Race

Women's Skiff	15-16 August	17-22 August	12 + Medal Race
Mixed Multihull	15-16 August	17-22 August	12 + Medal Race

- 6.2 The first warning signal for the first race on 17 August will not be before 1200.
- 6.3 On the last day of racing for each event no warning signal will be made after 1700.
- 6.4 Registration for competitors, coaches, team leaders and support personnel is scheduled to begin at 0900 on 15 August 2019 at the regatta office located at the Enoshima Yacht Harbour.
- 6.5 The first meeting for team leaders is scheduled for 1700 on 15 August at the Enoshima Yacht Harbour. From 17 August to 22 August, there will be a daily team leaders meeting at 0900.

7. EQUIPMENT INSPECTION

- 7.1 This event is an international event for the purpose of RRS G1.1.
- 7.2 A Technical Committee shall be appointed in accordance with RRS 92.
- 7.3 RRS G3 applies to chartered or loaned boats.
- 7.4 Boats shall be available for inspection in accordance with NoR 6.1 and the Equipment Inspection Schedule.
- 7.5 The procedures for inspections will be specified in the ER.
- 7.6 The fact that race officials may conduct inspections of a boat does not reduce the responsibilities of each competitor set out in this Notice of Race.
- 7.7 470 and Finn boats shall produce a valid measurement certificate, which for the 470 Class includes the completed measurement form. RRS 78.2 is deleted and replaced by: When a rule requires a valid certificate to be produced or its existence verified the certificate must be produced before the boat races. If the certificate is not produced or verified before the boat races the boat shall be disqualified from all races of the event unless the International Jury is satisfied there are exceptional circumstances.

8. SAILING INSTRUCTIONS

- 8.1 Sailing Instructions and other documents governing the event will be available by 1 August 2019 on the event website.
- 8.2 The Support Team Regulations will be available by 15 February 2019 on the event website.

9. VENUE

- 9.1 The regatta venue will be at the Enoshima Yacht Harbour. The race office will be open from 0900 on 15 August 2019. NoR Appendix 1 shows the location of the venue.
- 9.2 The racing areas will be in Sagami Bay. The location of the racing areas are shown in NoR Appendix 2. Additional Course Areas may be added by the Organizing Authority in the Sailing Instructions.

10. THE COURSES

- 10.1 The courses will be Windward/Leeward or Trapezoid with optional finishing legs.
- 10.2 The target times in minutes for the opening series and medal races are:

Event	Opening Series	Medal Race
Men's Windsurfer	20-25	20
Women's Windsurfer	20-25	20
Men's One Person Dinghy	50	25
Women's One Person Dinghy	50	25
Men's One Person Dinghy Heavyweight	50	25
Men's Two Person Dinghy	50	25

Women's Two Person Dinghy	50	25
Men's Skiff	30	20
Women's Skiff	30	20
Mixed Multihull	30	20

11. INTERNATIONAL JURY

- 11.1 An International Jury will be appointed in accordance with rule 91(b). Its decisions will be final as provided in RRS 70.5.

12. SCORING

- 12.1 RRS Appendix A will apply. RRS B8 is deleted.
- 12.2 One race is required to be completed to constitute a regatta.
- 12.3 When fewer than three races in the opening series have been completed, no score shall be excluded.
- 12.4 In medal races, a boat's score shall be double the number of points specified in RRS Appendix A4.1, with any [SP] then added. The score for that race shall not be excluded from the series score.
- 12.5 Ties in the series score between boats with different medal race point scores shall be broken in favour of the boat that scored better in the medal race. This changes RRS Appendix A8.
- 12.6 The boats assigned to compete in the medal race will be ranked highest in the regatta except for a boat disqualified from the medal race under rule RRS 5, 6 or 69.

13. SUPPORT TEAMS (INCLUDING SUPPORT BOATS)

- 13.1 No more than one support boat per National Authority per Event entered may be registered.
- 13.2 Support team members requiring access to the venue shall complete the accreditation application form that can be found on the event website after 15 February 2019. The deadline for entry application is 1 June 2019, unless otherwise agreed by the Organizing Authority in writing.
- 13.3 Support team members shall be entered by their National Authority.
- 13.4 Support boats shall be registered with the Organizing Authority by completing the form that can be found on the event website after 15 February 2019 and will be required to comply with local legislation. The support boat fee is stated in NoR 4.1 and shall be paid by 1 June 2019, unless otherwise agreed by the Organizing Authority in writing.
- 13.5 By registering as a support person and receiving accreditation, each such person agrees to be governed by the rules.
- 13.6 A support boat includes any boat that is under the control or direction of a person as defined in the RRS and also includes any person gathering data that may be used at a later time.
- 13.7 Support boats shall display the 3 letter code of their World Sailing Member National Authority at all times while afloat clearly visible from both sides of the boat. The minimum height for the letters shall be 200 mm.
- 13.8 Each support boat shall clearly display on both sides of the boat (tubes, hull or console) a unique **READY STEADY TOKYO - Sailing** sticker. The stickers will be supplied by the Organizing Authority.
- 13.9 The Organizing Authority may, at its discretion refuse coach boats entry to the venue if they are deemed unsuitable. Generally, open boats less than 7.5 metres in length, having minimum or no superstructure (cabin, coach house, bridge etc.), will be considered suitable.
- 13.10 Limitations of equipment that may be carried and mandatory equipment that shall be carried on support boats will be confirmed in the STR.
- 13.11 A National Authority, competitor, or support person shall not leave any device, piece of equipment, buoy, marker or similar item permanently in the water without the prior written permission of the Technical Delegates (except for support boats moored overnight). The Organizing Authority may reject or cancel entries under RRS 76.1 where the relevant National Authority (including its support team and competitors) is found by the

International Jury to have breached this provision in the period commencing from 1 March 2019. This is irrespective of whether an entry has been accepted at the time of the breach.

14. PRIZES

- 14.1 Prizes will be awarded to the top 3 boats in each event.

15. [DP] MEDIA RIGHTS

- 15.1 Competitors shall comply with the AMR. The AMR will include further information on television production, tracking, press conferences, interviews and promotion of the regatta.
- 15.2 By participating in the event competitors automatically grant to the Organizing Authority, their sponsors and World Sailing the right in perpetuity to make, use and show, from time to time at their discretion, any motion pictures and live, taped or filmed television and other reproductions of the athlete during the period of the competition without compensation.
- 15.3 Boats may be required to carry cameras, sound equipment or positioning equipment as specified by the Organizing Authority.
- 15.4 The top three competitors as well as the individual race winners may be required to attend a media press conference each day.
- 15.5 Competitors may be required for interviews at the regatta.
- 15.6 The attention of all competitors and support team personnel is drawn to the privacy notices published on World Sailing's website: <http://www.sailing.org/legal.php>

16. [NP] INSURANCE

- 16.1 Each 'person in charge' (see RRS 46) shall hold a valid insurance certificate showing proof of third-party liability coverage of at least JPY200,000,000 (or equivalent) per incident.
- 16.2 Each support boat shall have valid insurance including third party liability coverage of at least JPY200,000,000 (or equivalent) per incident.
- 16.3 The Organizing Authority is not responsible for verifying the status or validity of certificates.

17. RISK STATEMENT

- 17.1 Competitors and support persons participate in the event entirely at their own risk. Rule 4 of the RRS states: "The responsibility for a boat's decision to participate in a race or to continue racing is hers alone." Sailing is by its nature an unpredictable sport and therefore inherently involves an element of risk. By taking part in the event, each competitor agrees and acknowledges that:
- 17.1.1 They are aware of the inherent element of risk involved in the sport and accept responsibility for the exposure of themselves, their crew and their boat to such inherent risk whilst taking part in the event;
- 17.1.2 They are responsible for the safety of themselves, their crew, their boat and their other property whether afloat or ashore;
- 17.1.3 They accept responsibility for any injury, damage or loss to the extent caused by their own actions or omissions;
- 17.1.4 By participating in any race, they are satisfied that their boat is in good order, equipped to sail in the event and they are fit to participate;
- 17.1.5 The provision of a race management team, patrol boats, umpires and other officials and volunteers by the organizer does not relieve them of their own responsibilities;
- 17.1.6 The provision of patrol boat cover is limited to such assistance, particularly in extreme weather conditions, as can be practically provided in the circumstances.
- 17.1.7 It is their responsibility to familiarize themselves with any risks specific to this venue or this event drawn to their attention in any rules and information produced for the venue or event and to attend any safety briefing held for the event.

18. AMENDMENTS TO THE NOTICE OF RACE

- 18.1 This Notice of Race may be changed. Changes will be posted on the event website and on the Official Notice Board.

Contact Details

E-mail(about logistics): sailing_log@tokyo2020.jp
E-mail(other issues): sailing_info@tokyo2020.jp
Event Website: sailing.readysteadytokyo.com

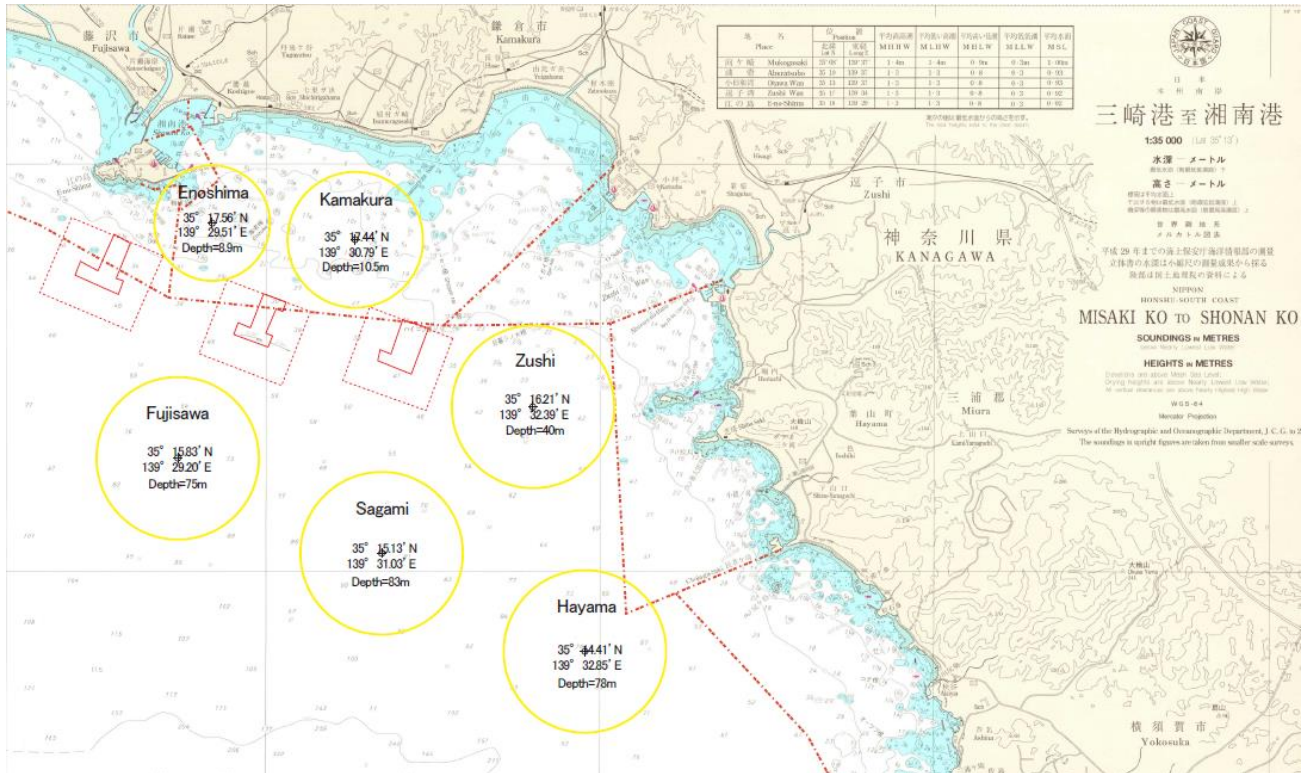
NoR Appendix 1

Enoshima Yacht Harbour Venue



NoR Appendix 2

RACING AREAS



The locations of the racing areas shown above are indicative and may be changed significantly by the Organizing Authority should they prove to be unsuitable.