

## Hempel Sailing World Championships Aarhus 2018

### Notice of Race / Sailing Instructions (NoR/SI)

To be supplemented by the Aarhus Sailing Instructions (ASI)

30 July - 12 August 2018, Aarhus, Denmark

#### **Incorporating Amendment No 1 published on 31 December 2017.**

The Organizing Authority is the Aarhus 2018 Organizing Committee in conjunction with World Sailing

#### 1. RULES

*Additional Rules referenced in the Notice of Race or Sailing Instructions will be published on the World Sailing website ([www.bit.ly/aarhusworlds](http://www.bit.ly/aarhusworlds)).*

- 1.1 The regatta will be governed by the rules as defined in *The 2017-2020 Racing Rules of Sailing* (RRS). Other documents under RRS Definition: Rule (g) include:
  - 1.1.1 [DP] [SP] The Aarhus Equipment Regulations (ER).
  - 1.1.2 [DP] The Aarhus Support Team Regulations (including Coach Boats) (STR).
  - 1.1.3 [NP] [DP] The Aarhus Athletes Media Requirements (AMR).
  - 1.1.4 The Aarhus 2018 Qualification System (QS).
  - 1.1.5 RRS Appendix P, Special Procedures for Rule 42.
  - 1.1.6 For Medal Races, World Sailing Addendum Q, Umpired Fleet Racing, available on the World Sailing website ([www.sailing.org](http://www.sailing.org)), will apply and changes a number of racing rules. A link to the version that is current when the regatta begins will appear in the ASI.
- 1.2 The National Authority Prescriptions that will apply are stated in full in Addendum A of the NoR/SI.
- 1.3 Decisions of the International Jury will be final as provided in RRS 70.5.
- 1.4 A boat shall neither make radio transmissions while racing nor receive radio communications not available to all boats, except in an emergency or when using equipment provided by the race committee. This restriction also applies to mobile telephones.
- 1.5 For the Men's Skiff, Women's Skiff and Mixed Multihull, RRS 44.1 and RRS P2.1 are changed so that the Two-Turns Penalty is replaced by the One-Turn Penalty.
- 1.6 In RRS 44.2 insert after the first sentence: However, if Mark 1a is set, a boat may take a penalty for an incident in the zone around Mark 1 or on the leg between Mark 1 and Mark 1a, as soon as possible after leaving the zone around Mark 1a.
- 1.7 In RRS 63.1 add '64.4(b),' after '64.3(d),'
- 1.8 For the Kiteboarding events, the event format, scoring and any change to the rules will be published by **31 January 2018**.
- 1.9 In all rules governing this regatta;
  - 1.9.1 Both 'athlete' and 'competitor' mean a person competing or intending to compete in the event.

1.9.2 [SP] denotes a rule for which a standard penalty may be applied by the race committee without a hearing or a discretionary penalty applied by the International Jury with a hearing; and

1.9.3 [NP] denotes a rule that shall not be grounds for protests by a boat. This changes RRS 60.1(a).

1.10 If there is a conflict between languages the English text will take precedence.

## 2. VENUE

2.1 The regatta will be at the Navitas Centre, Aarhus. Addendum C shows the location of the boat parks and event facilities.

Event	Boat Park	Opening Date
Men's Windsurfer	3	19 July
Women's Windsurfer	3	19 July
Men's One Person Dinghy	3	19 July
Women's One Person Dinghy	3	19 July
Men's One Person Dinghy Heavyweight	3	19 July
Men's Two Person Dinghy	3	19 July
Women's Two Person Dinghy	3	19 July
Men's Skiff	2	19 July
Women's Skiff	2	19 July
Mixed Two Person Multihull Foiling	1	19 July
Men's Kiteboarding	Kitepark	2 August
Women's Kiteboarding	Kitepark	2 August

2.2 The racing area will be in Aarhus Bay. The location of the racing areas will be published on the World Sailing website.

2.3 Access to the venue will be controlled by a personal accreditation system. All competitors and support persons shall carry their personal accreditation at all times while ashore in the venue and show their accreditation upon request.

## 3. ELIGIBILITY AND ENTRY

3.1 World Sailing Eligibility shall apply. Each competitor shall be registered as a World Sailing Sailor on the World Sailing website.

3.2 Only competitors registered by a Member National Authority (MNA) in good standing with World Sailing are eligible to enter the Sailing World Championships.

3.3 Unless otherwise approved by the IOC or the World Sailing Board in accordance with regulation 19.12, each competitor shall be a national of the country of the MNA which enters the boat or endorses the person in charge (as defined by RRS 46).

3.4 Each competitor shall present proof of their nationality when requested.

3.5 Competitors under 18 years of age shall present a signed and completed parent (or guardian) consent and declaration form at on-site registration

3.6 Competitors shall be fully paid members of the relevant international class association as required by those rules and evidence of membership shall be provided as requested by the Organizing Authority.

- 3.7 The regatta is open to boats in events and equipment chosen for the 2020 Olympic Sailing Competition and Kiteboarding as per the table in 3.9.
- 3.8 Gender requirements will also apply for each event as per the table in 3.9.
- 3.9 Events, Equipment and Quotas

Event	Equipment	Quotas
Men's Windsurfer	RS: X	100
Women's Windsurfer	RS: X	80
Men's One Person Dinghy	Laser	165
Women's One Person Dinghy	Laser Radial	120
Men's One Person Dinghy Heavyweight	Finn	90
Men's Two Person Dinghy	470	105
Women's Two Person Dinghy	470	70
Men's Skiff	49er	105
Women's Skiff	49er FX	80
Mixed Two Person Multihull Foiling	Nacra 17 Foiling	80
Men's Kiteboarding	Formula Kite	90
Women's Kiteboarding	Formula Kite	30

3.10 Entry Process and Deadlines:

- 3.10.1 The Qualification System for the Aarhus 2018 Sailing World Championships shall apply and confirms the quota process and entry deadlines. The Qualification System is published on the World Sailing website ([www.bit.ly/aarhusworlds](http://www.bit.ly/aarhusworlds))
- 3.10.2 Applications for quota places in accordance with the qualification system shall be made only by email to [registrations@sailing.org](mailto:registrations@sailing.org) using the World Sailing registration forms.
- 3.11 The Organizing Authority may cancel an event if the minimum number of entries has not been received by 12 weeks before the event. The minimum entry is ten boats in all events. Competitors will be notified of cancelled events by email and posting on the event website. The entry fees for cancelled events will be refunded.

## 4. ENTRY FEES

- 4.1 Fees are stated in Euros and include any local taxes.
- 4.2 Sailor Fees:

Event	Fee
One Person Events	€295
Two Person Events	€470
Laser and Laser Radial Championships Charter Fee	€895
Laser and Laser Radial Mandatory Insurance Fee	€30

4.3 Olympic Classes Fees:

Olympic Class	Fee
All Classes, including kiteboarding	€100

#### 4.4 Support Team Fees:

Support Team	Fee
Support Boats (including one support person)	€130
Additional coach or support person	€25

4.5 Support team personnel and support boats will be required to register and pay a fee, be insured and comply with local regulations to be permitted access to the venue and to use launching and berthing at each venue.

4.6 All support team personnel shall be registered by the relevant MNA. Registration will be completed through the World Sailing registration system. The registration deadline for support team personnel is 1 July 2018.

### 5. SUPPLIED EQUIPMENT

5.1 The equipment for the Men's One Person Dinghy and Women's One Person Dinghy events will be supplied by the International Laser Class Association (ILCA) on behalf of the Organizing Authority.

5.1.1 Laser and Laser Radial boats and equipment, excluding sails, will be supplied. The sails shall have National Flags as specified in Class Rule 4(h).

5.1.2 The list of equipment to be supplied will be stated in the ER.

5.1.3 The ER will list the personal equipment that is permitted.

5.1.4 No changes to equipment shall be made, except in compliance with the ER.

5.1.5 Only the supplied equipment, and permitted personal equipment, is allowed in the venue.

5.1.6 The equipment will be allocated by a draw arranged by the Organizing Authority before the event. Each athlete shall retain the same equipment throughout the regatta.

5.2 Equipment for the Men's and Women's One Person Dinghy events will be available for pre-regatta training from 24 July to 30 July 2018.

5.2.1 The pre-regatta training fee of €395 will be made directly to the International Laser Class Association at: <https://www.laserinternational.org/>

5.3 Equipment for the Men's and Women's One Person Dinghy events for the Aarhus 2018 Sailing World Championships will be available from 1200 on 31 July until 12 August 2018.

### 6. [NP] [DP] INSURANCE

6.1 Each 'person in charge' (see RRS 46) shall hold a valid insurance certificate showing proof of third-party liability with a minimum coverage per incident of €1,500,000 (or equivalent).

6.2 The Organizing Authority is not responsible for verifying the status or validity of certificates.

### 7. RISK STATEMENT

7.1 Competitors and support team participate in the series entirely at their own risk and they are reminded of the provisions of RRS 4, Decision to Race. Sailing is by its nature an

unpredictable sport and therefore involves an element of risk. By taking part in the event, each competitor agrees and acknowledges that:

- 7.1.1 They are aware of the inherent element of risk involved in the sport and accept responsibility for the exposure of themselves, their crew and their boat to such inherent risk whilst taking part in the event;
- 7.1.2 They are responsible for the safety of themselves, their crew, their boat and their other property whether afloat or ashore;
- 7.1.3 They accept responsibility for any injury, damage or loss to the extent caused by their own actions or omissions;
- 7.1.4 By participating in any race, they are satisfied that their boat is in good order, equipped to sail in the event and they are fit to participate;
- 7.1.5 The provision of a race management team, patrol boats, umpires and other officials and volunteers by the organizer does not relieve them of their own responsibilities;
- 7.1.6 The provision of patrol boat cover is limited to such assistance, particularly in extreme weather conditions, as can be practically provided in the circumstances.
- 7.1.7 It is their responsibility to familiarize themselves with any risks specific to this venue or this event drawn to their attention in any rules and information produced for the venue or event and to attend any safety briefing held for the event.

## **8. MEDIA RIGHTS**

- 8.1 By participating in the event competitors automatically grant to the Organizing Authority, World Sailing and their sponsors, the right in perpetuity to make, use and show, from time to time at their discretion, any motion pictures and live, taped or filmed television and other reproductions of the athlete during the period of the competition without compensation.
- 8.2 Athletes may be required to pass through the mixed zone on return to shore after racing.
- 8.3 All medallists shall be required to attend a media conference after the medal race. Athletes may also be required to attend a media conference at the end of the day's racing.
- 8.4 Athletes may also be asked to be available for interviews outside the formal mixed zone and media conferences, on either training or competition days.

## **9. [DP] CODE OF CONDUCT**

- 9.1 Competitors and support team shall comply with any reasonable request from a regatta official.
- 9.2 Competitors shall handle any boats or equipment provided by the organizing authority with proper care and seamanship, and in compliance with any written instructions.
- 9.3 [SP] Boats not racing shall avoid the area where boats are racing and of any official boats.
- 9.4 [SP] Boats that are on a Course Area to which they are not assigned shall remain clear of the area where boats are racing and any official boat.
- 9.5 World Sailing may reduce or remove a prize in the case of misconduct or refusal to comply with any reasonable request, including attendance at official functions.

## 10. [DP] IDENTIFICATION AND ADVERTISING

- 10.1 When provided by the Organizing Authority, boats or competitors shall carry, display or wear the following as instructed:
- 10.1.1 Bibs for all competitors;
  - 10.1.2 Coloured bibs for Event leaders (1st, 2nd and 3rd);
  - 10.1.3 Coloured dots on the mainsail for Event leaders (1st, 2nd, 3rd);
  - 10.1.4 Bow number;
  - 10.1.5 Event advertising;
  - 10.1.6 Cameras and sound equipment; and
  - 10.1.7 [SP] Tracking and timing system equipment.
    - (a) Competitors shall collect a tracking module from their assigned tracking desk before racing each day.
    - (b) On return to shore competitors shall return the tracking module within the protest time limit to the same place that they received it.
- 10.2 [SP] For Olympic classes events, boats shall display national flags on mainsails as specified in their class rules.

## 11. [DP] [NP] SAFETY REGULATIONS

- 11.1 Competitors shall wear personal flotation devices at all times while afloat, except briefly while changing or adjusting clothing or personal equipment.
- 11.2 Boats not leaving the harbour for a scheduled race shall promptly notify the Race Office.
- 11.3 [SP] Before leaving to race on each scheduled racing day, a competitor from each boat shall personally sign out on the required form.
- 11.4 [SP] Within 30 minutes after returning ashore, but no later than the protest time limit for that event, a competitor from each boat shall personally sign in on the required form.
- 11.5 A boat that retires from racing shall notify the race committee before leaving the racing area, or if that is not possible, shall notify the Race Office as soon as possible after returning ashore but no later than the protest time limit, by completing a retirement declaration form.
- 11.6 From 0900 on 19 July to 2000 on 12 August all boats and support boats shall avoid commercial traffic and shall cross shipping channels as close to right angles as practical, as shown in the racing areas diagram that will be posted on the World Sailing website.
- 11.7 [SP] Flag AP over H displayed ashore means 'Boats shall not leave the harbour. Wait for further instructions.' This adds to Race Signals AP over H.
- 11.8 When the race committee displays flag V with repetitive sounds, all official and support boats shall monitor the race committee radio channel for that racing area for search and rescue instructions. The race committee will announce 'Flag Victor' using the designated VHF Channel: Channel 72.
- 11.9 For the Mixed Two Person Multihull event, the following additional safety requirements will apply:
- 11.9.1 Each crew member shall wear a helmet that shall be to the minimum standard EN1385 or EN1077 or equivalent with at least 300 square centimeters of the exterior surface in a high visibility colour.

11.9.2 Each crew member may wear body protection, if the body protection also acts as a personal floatation device it shall comply with Nacra 17 Class Rule C.3.1.

11.9.3 Each crew shall carry a cutting device with a blade length of no more than 120mm.

11.9.4 If flag T is flown on the Race Committee boat before the waning signal of a race then helmets need not be worn.

## 12. COMMUNICATIONS WITH COMPETITORS

- 12.1 The Official Notice Board will be online on the World Sailing website ([www.bit.ly/aarhusworlds](http://www.bit.ly/aarhusworlds)) and will be repeated on the notice board in the Navitas Centre.
- 12.2 Notices will also be posted at each boat park. Failure to post a notice at these locations or failure for a competitor to access this information will not be grounds for redress. This changes RRS 62.
- 12.3 Changes to the Sailing Instructions:
- 12.3.1 Changes to the sailing instructions will be posted no later than two hours before the scheduled time of the first race affected.
- 12.3.2 Any change to the sailing instructions shall be approved by the Principal Race Officer and the World Sailing Technical Delegate.
- 12.4 When a visual signal is displayed over an area, fleet or event flag, the signal applies only to that area, fleet or event. This changes the Race Signals preamble.
- 12.5 Event flags will be class insignia on the following background:

Event	Class Insignia	Background Colour
Men's Windsurfer	RS:X	White
Women's Windsurfer	RS:X	Light Blue
Men's One Person Dinghy	Laser	White
Women's One Person Dinghy	Laser Radial	Light Blue
Men's One Person Dinghy Heavyweight	Finn	White
Men's Skiff	49er	White
Women's Skiff	49er FX	Light Blue
Men's Two Person Dinghy	470	White
Women's Two Person Dinghy	470	Light Blue
Mixed Two Person Multihull Foiling	Nacra 17 Foiling	White
Men's Kiteboarding	Formula Kite	White
Women's Kiteboarding	Formula Kite	Light Blue

- 12.6 Signals ashore will be displayed beside the launching ramps.

## 13. [DP] EQUIPMENT INSPECTION

- 13.1 All boats may be inspected for compliance with the ER and Class Rules.
- 13.2 Regulations and class rules. In the case of conflict between the class rules and the Equipment Regulations the latter will take precedence. The Technical Committee appointed by World Sailing will have the responsibility for interpreting the class rules.
- 13.3 Any changes to the ER will be posted on the official notice board.

- 13.4 470 and Finn boats shall produce a valid measurement certificate, which for the 470 Class includes the completed measurement form. RRS 78.2 is deleted and replaced by: When a rule requires a valid certificate to be produced or its existence verified the certificate must be produced before the boat races. If the certificate is not produced or verified before the boat races the boat shall be disqualified from all races of the event unless the International Jury is satisfied there are exceptional circumstances.
- 13.5 This event is an international event for the purpose of RRS G1.1.
- 13.6 The date and time for equipment inspection will be established by a draw conducted before the regatta, and posted on the Official Notice Board no later than 15 July 2018. The designated time of equipment inspection may be subject to change by the Technical Committee.
- 13.7 After equipment inspection, no boat or inspected equipment shall be taken from the boat park or the racing areas and their adjacent waters without written permission of the Organizing Authority.
- 13.8 Only entered competition boats may be kept in the venue boat park unless permission is granted by the Organizing Authority.
- 13.9 Any boat or equipment may be re-inspected at any time.

#### **14. SUPPORT TEAMS (INCLUDING SUPPORT BOATS)**

- 14.1 The number of support boats that a MNA may register shall be restricted by the Organizing Authority. Full details will be published by 31 January 2018.
- 14.2 By registering as a support person and receiving accreditation, each such person agrees to be governed by the rules.
- 14.3 A support boat includes any boat that is under the control or direction of a person who is providing physical or advisory support to an athlete, including the gathering of data that may be used at a later time.
- 14.4 Support boats shall be registered either before leaving the marina for the first time or by 1800 on the day before the first race of the event that it is supporting, whichever is earlier.
- 14.5 Support boats shall display the 3 letter code of their World Sailing Member National Authority at all times while afloat clearly visible from both sides of the boat. The minimum height for the letters shall be 200 mm.
- 14.6 Each support boat shall clearly display on both sides of the boat (tubes, hull or console) a unique Aarhus 2018 sticker. The stickers will be supplied by the Organizing Authority.
- 14.7 The Organizing Authority may, at its discretion refuse coach boats entry to the venue if they are deemed unsuitable. Generally, open boats less than 7.5 metres in length, having minimum or no superstructure (cabin, coach house, bridge etc.), will be considered suitable.
- 14.8 Limitations of equipment that may be carried and mandatory equipment that shall be carried on support boats will be confirmed in the Support Team Regulations.

#### **15. FORMAT**

- 15.1 The format for each event consists of an opening series and a medal race. If the event is split into fleets, the opening series will be divided into a qualifying series and a final series.
- 15.2 Qualifying series



15.2.1 Boats will be assigned to yellow, blue (and red when needed) fleets of, as nearly as possible, equal size and ability. Initial assignments will be made by a seeding committee appointed by the race committee. Those assignments will be posted by 2100 on the day before the first scheduled race for each event.

15.2.2 Boats will be reassigned to fleets after each day of racing, except if on the first day fewer than two races are completed by all fleets. If all fleets have completed the same number of races, boats will be reassigned on the basis of their ranks in the series. If all fleets have not completed the same number of races, the series scores for reassignment will be calculated for those races, numbered in order of completion, completed by all fleets. For three fleets, and similarly for any other number, reassignments will be made as follows:

Rank in series	Fleet assignment
First	Yellow
Second	Blue
Third	Red
Fourth	Red
Fifth	Blue
Sixth	Yellow
Seventh	Yellow
Eighth	Blue
and so on.	

If two or more boats have the same rank, they will be entered in the left column in the order of fleets in SI 15.2.1.

15.2.3 Assignments will be based on the ranking available at 2100 that day regardless of protests or requests for redress not yet decided.

15.2.4 If all fleets have not completed the same number of races by the end of a day, the fleets with fewer races will continue racing the following day until all fleets have completed the same number of races. All boats will thereafter race in the new fleets.

### 15.3 Final series:

15.3.1 A final series will be scheduled for all Events with 6 or more qualifying series races completed.

15.3.2 Boats will be assigned to the gold, silver (and bronze when needed) fleets on the basis of their ranks in the qualifying series. The gold fleets will have the number of boats as published in the ASI. The final-series fleets will have, as nearly as possible, equal size but none larger than the gold fleet. Boats with the best qualifying-series ranks will race all final-series races in the gold fleet, boats with the next-best qualifying-series ranks will race in the silver fleet, etc.

15.3.3 Any recalculation of final series ranking after boats have been assigned to gold fleets will not affect the assignments except that a redress decision may promote a boat to a higher fleet.

### 15.4 Medal Race

15.4.1 A medal race for the 10 highest ranked boats will be scheduled for each event with 6 or more opening series races completed.

15.4.2 Assignments to a medal race will be based on the ranking available at 0800 on the day of the medal race. The protest committee may extend the time limit.

15.5 The number of fleets, number of races, races per day, and the types of races will be published in the ASI.

## 16. SCHEDULE AND COURSE ASSIGNMENTS

16.1 The schedule, including registration, equipment inspection and racing, is as follows:

Event	Registration / Equipment Inspection	Racing (including reserve days)	Number of Races
Men's Windsurfer	2-4 August	5-12 August	12 + Medal
Women's Windsurfer	2-4 August	5-12 August	12 + Medal
Men's One Person Dinghy	31 July – 2 August	3-11 August	10 + Medal
Women's One Person Dinghy	31 July – 2 August	3-11 August	10 + Medal
Men's One Person Dinghy Heavyweight	30 July – 1 August	2-10 August	10 + Medal
Men's Two Person Dinghy	30 July – 1 August	2-10 August	10 + Medal
Women's Two Person Dinghy	30 July – 1 August	2-10 August	10 + Medal
Men's Skiff	1-3 August	4-12 August	12 + Medal
Women's Skiff	1-3 August	4-12 August	12 + Medal
Mixed Two Person Multihull Foiling	2-4 August	5-12 August	12 + Medal
Men's Kiteboarding	4 August	5-11 August	24 + Medal
Women's Kiteboarding	4 August	5-11 August	24 + Medal

16.2 The provisional race schedule, including the time of the first warning signals, and assignments of Events to course areas will be posted as ASI Addendum 3 no later than 15 July 2018.

16.2.1 An update to ASI Addendum 3 will be posted daily no later than 20:00 on the previous evening of any race affected.

16.3 Any reassignment of Events to Course Areas will be posted;

16.3.1 before 09:00 on the day it will take effect, or

16.3.2 when flag AP is displayed ashore, 30 minutes before flag AP for that event or fleet is removed; or

16.3.3 when flag AP is displayed afloat, the course area may be changed. A race committee boat will display flag L over the event(s) flag and move to the new Course Area.

16.4 Races not sailed on the scheduled day may be sailed on the following day at the discretion of the race committee, including sailing an opening series race on the provisional medal race day.

16.5 A medal race will not be scheduled on the same day as an opening series race for that Event.

- 16.6 On Sunday 12 August, no warning signal will be made after 16:30.
- 16.7 The Organizing Authority may modify the number of races for an Event and may schedule a medal race or medal series for an Event following the publication of the format for the Aarhus 2018 Sailing World Championships.
- 16.8 The Opening Ceremony will take place on Thursday 2 August at 1800 at 'Havnepladsen' (just south of the Navitas centre). All athletes and support personnel shall attend the Opening Ceremony unless otherwise authorised by the Organizing Authority in writing.

## 17. THE COURSES

- 17.1 The courses will be Windward/Leeward or Trapezoid. The diagrams in NoR/SI Addendum B show the courses, the course designations, the approximate angles between legs, the order in which marks are to be passed, and the side on which each mark is to be left.
- 17.2 To change the next leg of the course, the race committee will (a) lay a new mark, (b) move the finishing line, or (c) move the leeward gate. When a new mark is laid, the original mark will be removed as soon as possible. When in a subsequent change a new mark is replaced, it will be replaced by an original mark.
- 17.3 Courses will not be shortened. This changes RRS 32.
- 17.4 The Organizing Authority may add new courses or modify the courses to reflect possible courses for the 2020 Olympic Sailing Competition.

## 18. THE START

- 18.1 The starting line will be between a staff displaying an orange flag on the race committee vessel at the starboard end and either:
  - 18.1.1 the course side of the port-end inflatable starting mark, or
  - 18.1.2 a staff displaying an orange flag on the race committee vessel at the port end.
- 18.2 A buoy may be attached to the race committee starting boat anchor line just below keel depth. Boats shall not pass between this buoy and the race committee starting boat at any time. This buoy is part of the race committee starting boat ground tackle. [DP]
- 18.3 When a starting sequence is in progress, boats whose warning signal has not been made shall avoid the starting area. The starting area is defined as a rectangle 75 meters from the starting line and marks in all directions. [DP]
- 18.4 Rule 26 and Preparatory Signals in Race Signals are deleted. Races will be started using the following signals. Times shall be taken from the display of visual signals. This changes RRS 26 and Race Signals.

Minutes before starting signal	Visual signal displayed	Visual signal removed	Sound signal	Means
6	Event flag Starting penalty if required (U or Black) Rule 42 (flag O if Applicable)		No sound	Event to start and applicable rules

5	White flag with number 5		One	Warning signal
4	Blue flag with number 4	White flag	One	Preparatory signal
3	Pink flag with number 3	Blue flag	One	Three minutes
2	Red flag with number 2	Pink flag	One	Two minutes
1	Yellow flag with number 1	Red flag	One long	One minute
0	Green flag	Yellow flag	One	Start signal
+ 1		Green flag and Class Flag (U or Black and O)	No sound	

18.5 To alert boats that a race or sequence of races will begin soon, the orange starting line flag will be displayed with one sound at least five minutes before a warning signal is made.

18.6 The warning signal for each succeeding race will be made as soon as practicable.

## 19. THE FINISH

19.1 The finishing line will be between a staff displaying an orange flag on the race committee vessel and either:

19.1.1 the course side of the nearby inflatable finishing mark, or

19.1.2 a staff displaying an orange flag on the nearby race committee vessel.

## 20. TIME LIMITS AND TARGET TIMES

20.1 For the opening series, time limits and target times are as follows:

Class	Time Limit	Mark 1 Time Limit	Finish Window	Target Time
RS: X	45	20	10	20-25
Laser, Laser Radial	75	25	15	50
Finn	75	25	15	50
470	75	25	15	45
49er, 49er FX	50	20	10	30
Nacra 17 Foiling	50	20	10	30

20.2 For a medal race, time limits and target times are as follows:

Class	Time Limit	Mark 1 Time Limit	Finish Window	Target Time
RS: X	40	10	10	20
Laser, Laser Radial	40	15	10	25
Finn	40	15	10	25
470	40	15	10	25
49er, 49er FX	40	10	10	20
Nacra 17 Foiling	40	10	10	20

- 20.3 If no boat rounds Mark 1 within the Mark 1 time limit, the race committee shall abandon the race.
- 20.4 Any boat that does not finish within the Finish Window (time after the first boat finishes) shall be scored DNF without a hearing. This changes RRS 63.1 and A5.

## 21. SCORING

- 21.1 The Low Point System of RRS Appendix A will apply. RRS B8 is deleted.
- 21.2 When fewer than three opening series races have been completed, a boat's series score will be the total of her race scores. When three or more opening series races have been completed, a boat's score will be the total of her race scores excluding her worst score. However, the score from any medal race will not be excluded.
- 21.3 A boat starting later than 4 minutes after her starting signal will be scored Did Not Start. This changes RRS A4 and A5.
- 21.4 RRS A4.2 is changed so that those scores are based on
- 21.4.1 The number of boats assigned to compete in a single fleet series, or
  - 21.4.2 The number of boats assigned to the largest fleet in a split fleet qualification series or
  - 21.4.3 For the medal race, the number of boats assigned to the medal race.
- 21.5 One race is required to be completed to constitute a regatta.
- 21.6 If at the end of a split fleet qualifying series some boats have more race scores than others, scores for the most recent races will be excluded so that all boats have the same number of race scores.
- 21.7 Final series fleets will be scored separately and different final series fleets need not have completed the same number of final races.
- 21.8 For a medal race RRS A4.1 is changed so that the points are doubled. RRS A4.2 is changed so that the scores are based on the number of boats assigned in that race and then doubled.
- 21.9 RRS A8 is changed as follows:
- 21.9.1 For boats assigned to compete in a medal race, ties in the regatta score will be broken by the medal race score. This changes RRS A8.
  - 21.9.2 For tied boats with the same points score in the medal race, ties will be broken applying RRS A8 to the opening series scores.
  - 21.9.3 Ties in an opening series will be broken in accordance with RRS A8.2, except that ties during a split fleet qualifying series will be broken in accordance with RRS A8.
- 21.10 A boat assigned to compete in a medal race shall make a genuine effort to start, sail the course and finish. The penalty for a breach of this instruction will be ranking the boat tenth in the regatta. If there are two such boats, they will be ranked ninth and tenth, in order of their opening-series ranks, and so on. This changes RRS A2.
- 21.11 The boats competing in a medal race shall be scored highest in the regatta. This may not apply to a boat penalized under RRS 5, 6 or 69.
- 21.12 To request correction of an alleged error in posted race or series results, a boat may complete a scoring enquiry form available at the Race Office.

## **22. INTERNATIONAL JURY. PROTESTS, PENALTIES AND REQUESTS FOR REDRESS**

- 22.1 An International Jury will be appointed in accordance with rule RRS 91(b).
- 22.2 Protest forms are available at the Race Office or Jury Office. Protests and requests for redress or reopening shall be delivered to the Jury Office within the appropriate time limit. Additional office locations may be specified in the ASI.
- 22.3 Notices will be posted within 30 minutes of the protest time limit to inform competitors of hearings in which they are parties or named as witnesses. Hearings will be held beginning at the time posted. Hearings may be scheduled to begin up to 30 minutes before the end of protest time Limit.
- 22.4 Notices of protests by the race committee, technical committee or protest committee will be posted to inform boats under RRS 61.1(b).
- 22.5 A list of boats that have been penalized under Appendix P for breaking RRS 42 and under SI 19.7 will be posted.
- 22.6 Penalties for breaches of the class rules, or rules in the NoR and SIs marked [DP] or [SP] should the case go to a hearing, are at the discretion of the protest committee and may be less than disqualification.
- 22.7 For breaches of NoR/SI marked [SP], the race committee may apply a standard penalty without a hearing. A list of these breaches and the associated standard penalties will be posted on the Official Notice Board. However, the race committee may protest a boat when they consider the standard penalty to be inappropriate. A boat that has been penalised with a standard penalty can neither be protested for the same incident by another boat nor can another boat request redress for this race committee action. This changes RRS 60.1, 63.1 and Appendix A5.
- 22.8 On the last day of a series, or on the last scheduled day of racing, a request for redress based on a jury decision shall be delivered no later than 30 minutes after the decision was posted. This changes RRS 62.2.
- 22.9 In RRS 66 change 'On the last scheduled day of racing...' to 'On the last day of a series or on the last day of racing...'
- 22.10 If RRS Appendix N1.4(b) applies, the time limit for requesting a hearing under that rule is 30 minutes after the party was informed of the panel's decision.

## **23. OFFICIAL BOATS**

### **23.1 Identification:**

Equipment Inspection – Any flag with “M” or “Measurer”

Jury/Judges/Umpires – Any flag with “JURY”, “IJ” or “J”

Media – Any flag with “PRESS”, “MEDIA” or “TV”

Organizers/VIP – Any flag with “VIP”

Race Committee – Any flag with letter of the racing area or with “RC” or “Race Committee”

PRO – any flag with ‘PRO’

Field of Play Manager – any flag with ‘FPM’

Rescue or Course Marshals – Any flag with “Marshall”, “RESCUE” or “SAFETY”

First Aid or Medical – Green cross on a white background.

- 23.2 Actions by official boats, drones or helicopters shall not be grounds for requesting redress by a boat. This changes RRS 60.1(b).

## 24. PRIZES

- 24.1 Prizes will be awarded to the top 3 boats in each event.
- 24.2 The President of the IOC Cup will be awarded to the top ranked MNA based on the medal table of all 10 events. The medal table will be sorted by the number of gold medals first, then silver medals and finally bronze medals. If there is a tie MNAs with equal ranking will be sorted alphabetically by World Sailing country code.
- 24.3 Olympic Class Perpetual Trophies will be awarded.



## **Addendum A – Prescriptions of the Member National Authority**

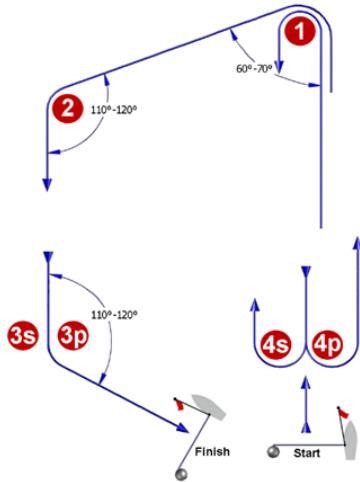
- A1** Danish legislation requires every boat to be equipped with personal buoyancy for the number of persons on board at any time.



## Addendum B – Course Diagrams

### ADDENDUM B - COURSE ILLUSTRATIONS

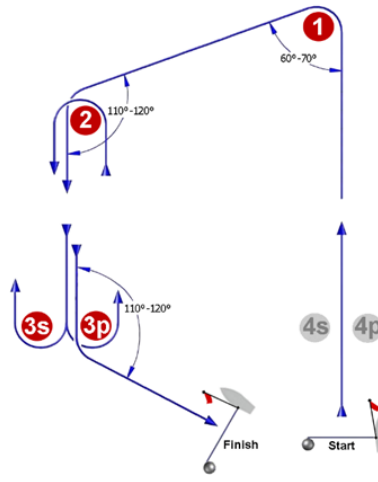
**I**



Course: Inner Trapezoid

Signal	Mark Rounding Order
I2	Start - 1 - 4s/4p - 1 - 2 - 3p - Finish
I3	Start - 1 - 4s/4p - 1 - 4s/4p - 1 - 2 - 3p - Finish
I4	Start - 1 - 4s/4p - 1 - 4s/4p - 1 - 4s/4p - 1 - 2 - 3p - Finish

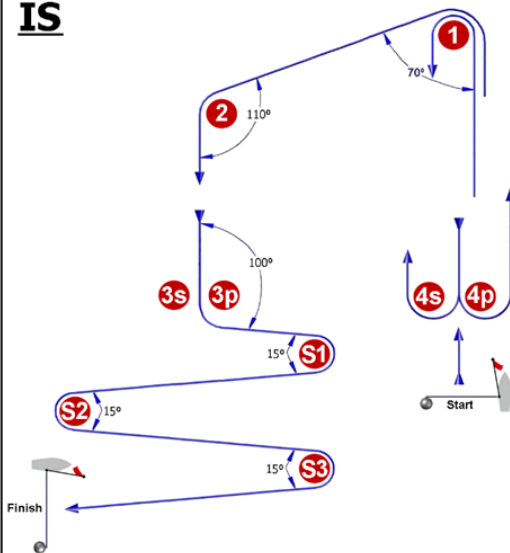
**O**



Course: Outer Trapezoid

Signal	Mark Rounding Order
O2	Start - 1 - 2 - 3s/3p - 2 - 3p - Finish
O3	Start - 1 - 2 - 3s/3p - 2 - 3s/3p - 2 - 3p - Finish
O4	Start - 1 - 2 - 3s/3p - 2 - 3s/3p - 2 - 3s/3p - 2 - 3p - Finish

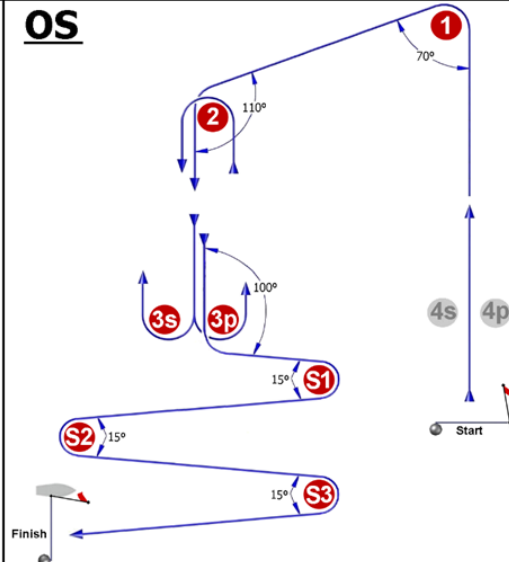
**IS**



Course: Inner Slalom

Signal	Mark Rounding Order
IS2	Start - 1 - 4s/4p - 1 - 2 - 3p - S1 - S2 - S3 - Finish
IS3	Start - 1 - 4s/4p - 1 - 4s/4p - 1 - 2 - 3p - S1 - S2 - S3 - Finish
IS4	Start - 1 - 4s/4p - 1 - 4s/4p - 1 - 4s/4p - 1 - 2 - 3p - S1 - S2 - S3 - Finish

**OS**

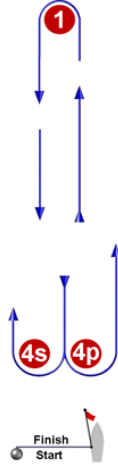


Course: Outer Slalom

Signal	Mark Rounding Order
OS2	Start - 1 - 2 - 3s/3p - 2 - 3p - S1 - S2 - S3 - Finish
OS3	Start - 1 - 2 - 3s/3p - 2 - 3s/3p - 2 - 3p - S1 - S2 - S3 - Finish
OS4	Start - 1 - 2 - 3s/3p - 2 - 3s/3p - 2 - 3s/3p - 2 - 3p - S1 - S2 - S3 - Finish

ADDENDUM B - COURSE ILLUSTRATIONS

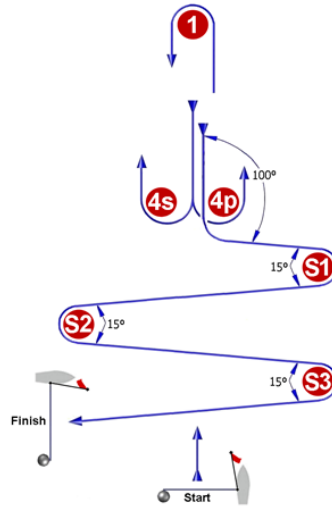
**L**



Course: Windward/Leeward

Signal	Mark Rounding Order
L2	Start - 1 - 4s/4p - 1 - Finish
L3	Start - 1 - 4s/4p - 1 - 4s/4p - 1 - Finish
L4	Start - 1 - 4s/4p - 1 - 4s/4p - 1 - 4s/4p - 1 - Finish

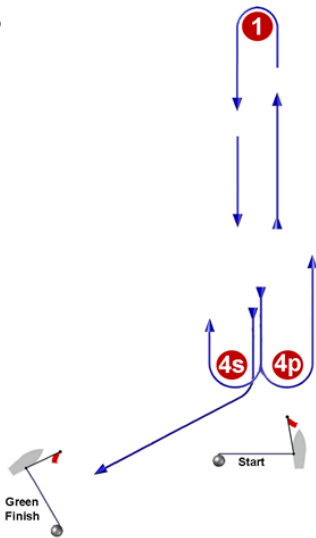
**LS**



Course: Windward/Leeward With Slalom Finish

Signal	Mark Rounding Order
LS2	Start - 1 - 4s/4p - 1 - 4p - S1 - S2 - S3 - Finish
LS3	Start - 1 - 4s/4p - 1 - 4s/4p - 1 - 4p - S1 - S2 - S3 - Finish
LS4	Start - 1 - 4s/4p - 1 - 4s/4p - 1 - 4s/4p - 1 - 4p - S1 - S2 - S3 - Finish

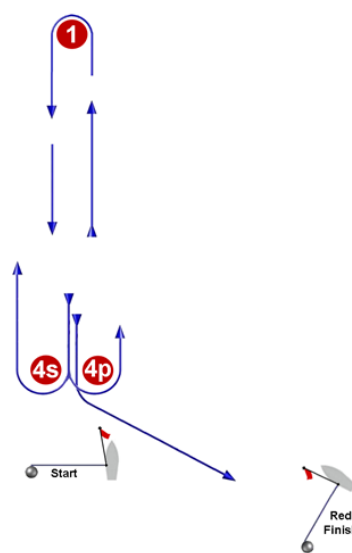
**LG**



Course: Windward/Leeward

Signal	Mark Rounding Order
LG2	Start - 1 - 4s/4p - 1 - 4s - Finish
LG3	Start - 1 - 4s/4p - 1 - 4s/4p - 1 - 4s - Finish
LG4	Start - 1 - 4s/4p - 1 - 4s/4p - 1 - 4s/4p - 1 - 4s - Finish

**LR**

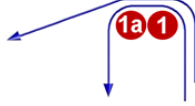


Course: Windward/Leeward

Signal	Mark Rounding Order
LR2	Start - 1 - 4s/4p - 1 - 4p - Finish
LR3	Start - 1 - 4s/4p - 1 - 4s/4p - 1 - 4p - Finish
LR4	Start - 1 - 4s/4p - 1 - 4s/4p - 1 - 4s/4p - 1 - 4p - Finish

ADDENDUM B - COURSE ILLUSTRATIONS

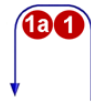
**IA**



Course: Same As Course I Except With Offset Mark 1A

Signal	Mark Rounding Order
<b>IA2</b>	Start - 1 - 1a - 4s/4p - 1 - 1a - 2 - 3p - Finish
<b>IA3</b>	Start - 1 - 1a - 4s/4p - 1 - 1a - 4s/4p - 1 - 1a - 2 - 3p - Finish
<b>IA4</b>	Start - 1 - 1a - 4s/4p - 1 - 1a - 4s/4p - 1 - 1a - 4s/4p - 1 - 1a - 2 - 3p - Finish

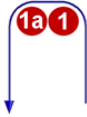
**LGA**



Course: Same As Course LG Except With Offset Mark 1A

Signal	Mark Rounding Order
<b>LGA2</b>	Start - 1 - 1a - 4s/4p - 1 - 1a - 4s - Finish
<b>LGA3</b>	Start - 1 - 1a - 4s/4p - 1 - 1a - 4s/4p - 1 - 1a - 4s - Finish
<b>LGA4</b>	Start - 1 - 1a - 4s/4p - 1 - 1a - 4s/4p - 1 - 1a - 4s/4p - 1 - 1a - 4s - Finish

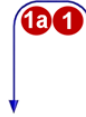
**LA**



Course: Same As Course L Except With Offset Mark 1A

Signal	Mark Rounding Order
<b>LA2</b>	Start - 1 - 1a - 4s/4p - 1 - 1a - Finish
<b>LA3</b>	Start - 1 - 1a - 4s/4p - 1 - 1a - 4s/4p - 1 - 1a - Finish
<b>LA4</b>	Start - 1 - 1a - 4s/4p - 1 - 1a - 4s/4p - 1 - 1a - 4s/4p - 1 - 1a - Finish

**LRA**



Course: Same As Course LR Except With Offset Mark 1A

Signal	Mark Rounding Order
<b>LRA2</b>	Start - 1 - 1a - 4s/4p - 1 - 1a - 4p - Finish
<b>LRA3</b>	Start - 1 - 1a - 4s/4p - 1 - 1a - 4s/4p - 1 - 1a - 4p - Finish
<b>LRA4</b>	Start - 1 - 1a - 4s/4p - 1 - 1a - 4s/4p - 1 - 1a - 4s/4p - 1 - 1a - 4p - Finish

## Addendum C – Venue

