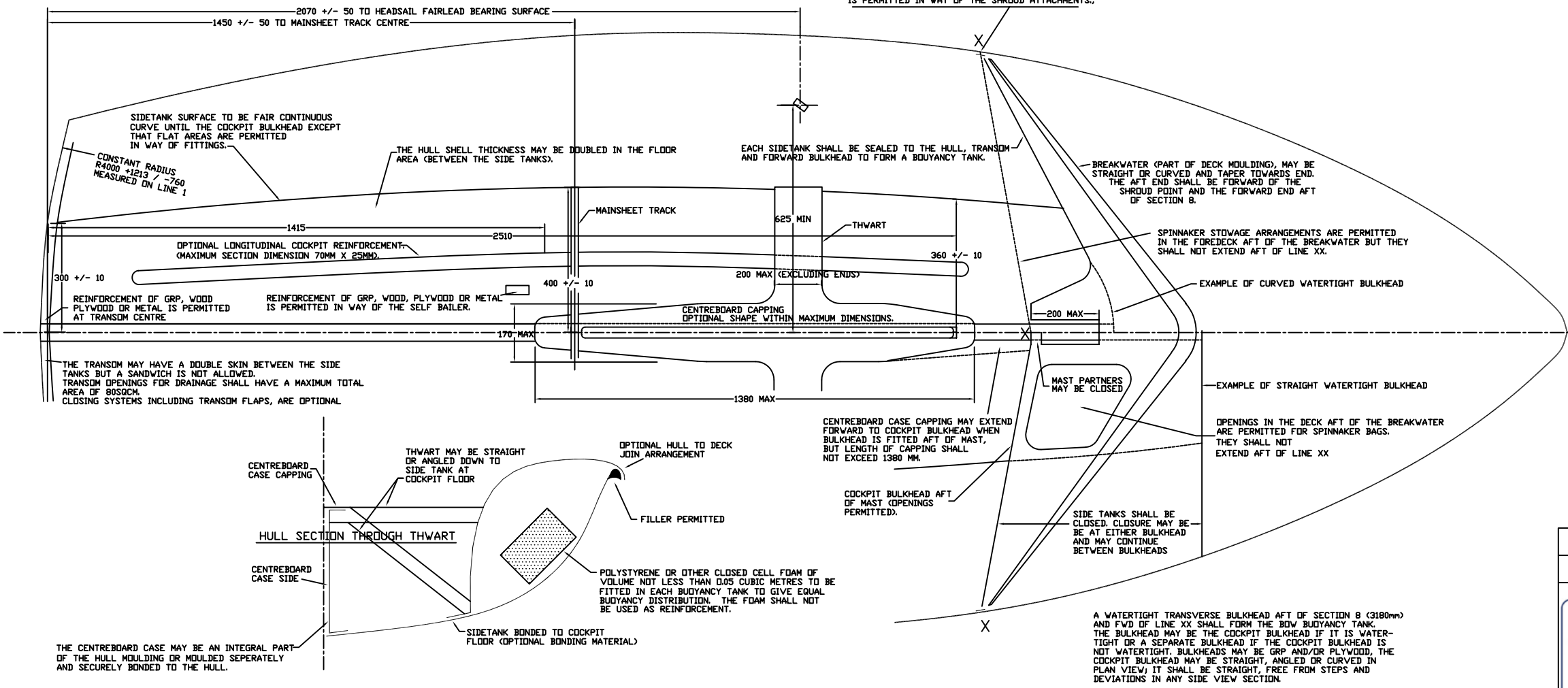


- CONSTRUCTION**
- 1) THE HULL SHELL, TRANSOM, SIDETANKS, FOREDECK, KEELSON, CENTREBOARD CASE, CENTREBOARD CAPPING, THWART AND MAST PARTNERS SHALL BE GLASS REINFORCED PLASTIC (GRP). GLASS FIBER SHALL NOT BE LESS THAN 800 G/SQM.
 - 2) ALL GRP USED FOR MouldING SHALL BE OF UNSATURATED CROSS LINKED POLYESTER RESIN (EXCLUDING DERIVATIVES LIKE VINYLESTER AND BISPHENOLIC RESIN) REINFORCED WITH E GLASS FIBRES USED AS CHOPPED STRAND MAT, WOVEN ROVINGS, MULTIAXIAL FABRICS OR ANY COMBINATION OF THESE. UNIDIRECTIONAL TAPES/ROVINGS ARE NOT PERMITTED.
 - 3) THE MouldED SURFACES OF ALL GRP MouldINGS SHALL BE POLYESTER GELCOAT OF OPTIONAL COLOUR.
 - 4) MouldINGS SHALL BE SINGLE SKIN CONSTRUCTION, EXCEPT WHERE MENTIONED ON THIS DRAWING, OR HAVE A CORE MATERIAL WHICH SHALL BE "FIBRE COREMAT" BY LANTOR OR SIMILAR TYPE AND PHYSICAL CHARACTERISTICS. THE CORE MATERIAL SHALL NOT BE MORE THAN 2MM THICK BEFORE USE.
 - 5) MouldINGS SHALL HAVE A UNIFORM LAMINATE SPECIFICATION THROUGHOUT EXCEPT THAT ADDITIONAL GRP, WOOD, PLYWOOD OR METAL MAY BE USED FOR LOCAL REINFORCEMENT WHERE SPECIFIED ON THIS DRAWING AND IN WAY OF FITTINGS.
 - 6) BONDING SURFACES (FLANGES) SHALL BE MAXIMUM 120MM WIDE
 - 7) REINFORCEMENT STIFFENERS OF THE OMEGA TYPE (SEE DRAWING) MAY BE USED TO STIFFEN MouldINGS AT THE BUILDER'S DISCRETION.
 - 8) COREMAT: A MINIMUM SURFACE OF COREMAT IS MANUFACTURED BETWEEN THE TWO SIDE TANKS, THE TRANSOM AND THE WATERTIGHT BULKHEAD
- HULL WEIGHT: SEE CLASS RULE D.5



INTERNATIONAL 420 CLASS
 Building Specification - Issue H

Designer: Christian Maury

Size: A0 Scale: 1 : 5

All dimensions in mm

ISAF (UK) Ltd. Ariadne House, Town Quay, Southampton, Hampshire, SO14 2AQ, United Kingdom

Dwg No: 5

Date: 12 / 02 / 2009

Drawn by: P. Handley / H.Thorpe

Sheet No. 1 of 1