

## PART 3 – STRATEGIC PROJECT DELIVERY

### 4.0 CONNECT TO SAILING PROJECT DELIVERY MODEL

Connect to Sailing will be undertaken by a NTF for each participating member country. The NTF will engage primarily with the country MNA and will involve all relevant sailing stakeholders to set up and implement appropriate schemes.

NTFs shall be formed from members that between them are able to directly provide knowledge of community sailing projects, sports development, club culture, marketing, education and the marine trade. It is strongly recommended that the membership of the NTF be limited to those with the abilities and expertise to contribute positively to these areas. Model NTF size is recommended as around 10 members; emphasizing the importance to restrict membership to those able to regularly and actively promote and manage the implementation of projects.

The NTF will also be responsible for obtaining and managing all funding required for implemented schemes. A Connect to Sailing Ambassador shall be appointed by ISAF for each participating member country. The role of the Ambassador will be to act as an enabler and catalyst. The Ambassador will bring together the NTF and other relevant stakeholders and supervise and encourage the development of working partnerships to promote and deliver the goal of Connect to Sailing. The Ambassador shall act as the focal and reporting point of the NTF to ISAF.

Strategic Connect to Sailing activity and the facilitation of the project as a lively collaborative environment for exchange of ideas and experience will be co-ordinated by the ISAF appointed Project Manager. This role is defined at section 11.2

It is anticipated that when fully developed the role of the Project Manager within Connect to Sailing may be progressively reduced as the established network becomes self supporting through active network connections. The proposed Connect to Sailing delivery model is shown at Figure 2

The terms of reference for Connect to Sailing Ambassadors and NTFs are detailed in Appendix B and C.

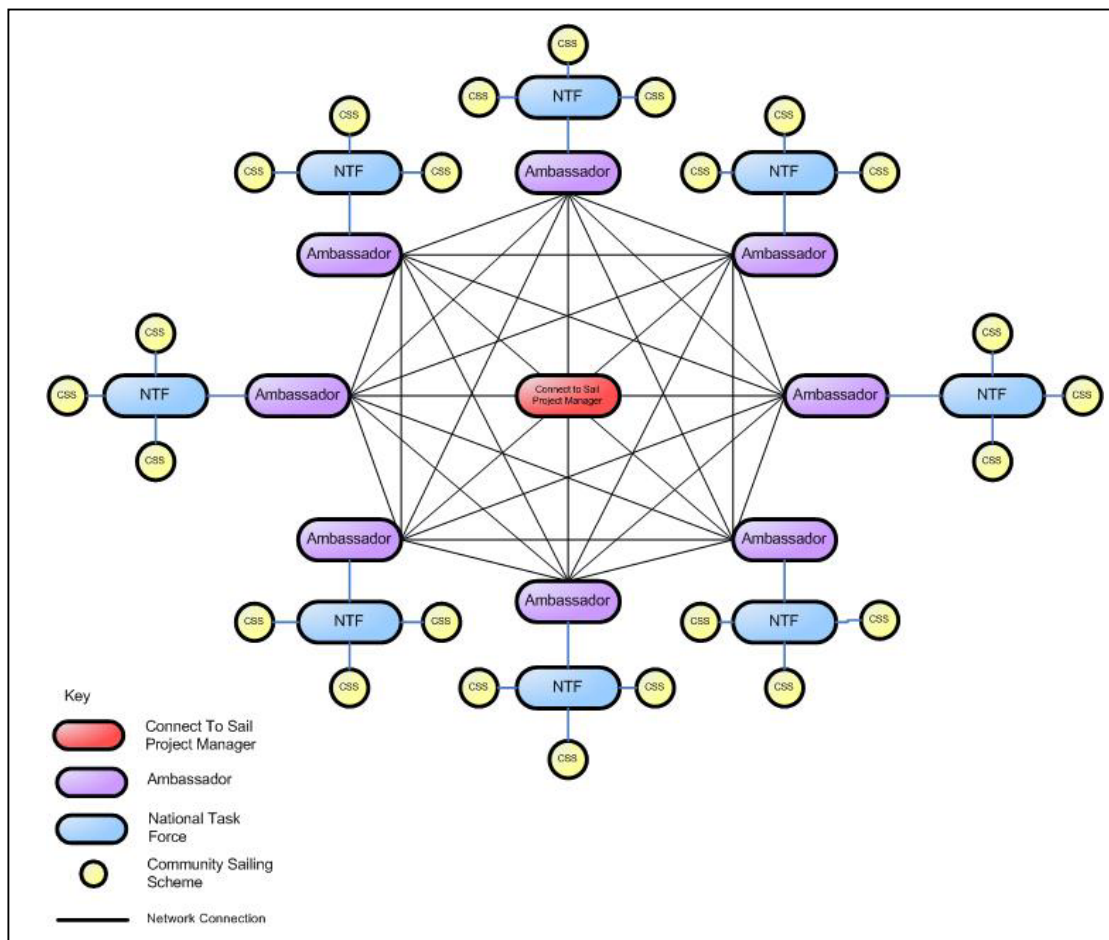


Figure 2 – Proposed Connect to Sailing Delivery Model

## 5.0 PROJECT MANAGEMENT STRUCTURE

National sailing projects and community sailing schemes, including engagement with the member country MNA, shall be locally managed by the NTF.

ISAF involvement in the Connect to Sailing programme shall be restricted to a strategic level to facilitate a co-ordinated, self managed and sustainable development programme. The proposed strategic management structure is shown at Figure 3.

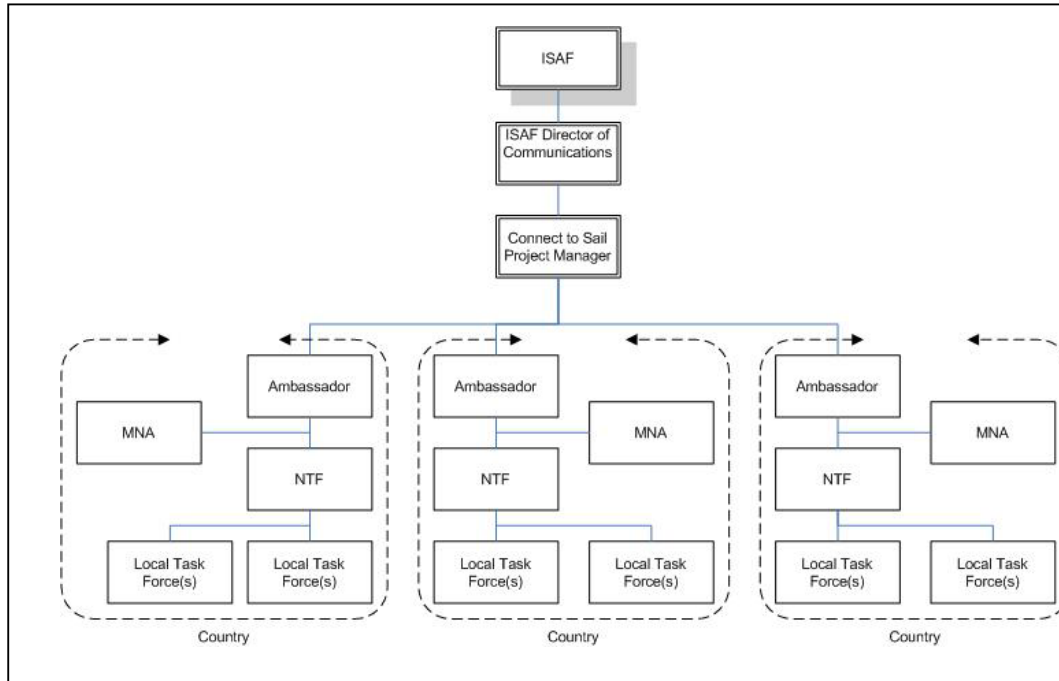


Figure 3 – Strategic Management Structure

## 6.0 PROJECT REPORTING

To enable the creation, use and transfer of knowledge and best practice throughout the Connect to Sailing network all NTFs shall submit progress reports to the Project Manager through their Ambassador.

The format, content and frequency of project reports shall be individually agreed by the Connect to Sailing Project Manager and each Ambassador.